

Datasheet for ABIN1881334  
**anti-FAM50A antibody (C-Term)**[Go to Product page](#)

2 Images

2 Publications

## Overview

Quantity:	400 µL
Target:	FAM50A
Binding Specificity:	AA 311-339, C-Term
Reactivity:	Human
Host:	Rabbit
Clonality:	Polyclonal
Conjugate:	This FAM50A antibody is un-conjugated
Application:	Western Blotting (WB), Immunofluorescence (IF)

## Product Details

Immunogen:	This FAM50A antibody is generated from rabbits immunized with a KLH conjugated synthetic peptide between 311-339 amino acids from the C-terminal region of human FAM50A.
Clone:	RB44471
Isotype:	Ig Fraction
Predicted Reactivity:	X, Zf, M
Purification:	This antibody is purified through a protein A column, followed by peptide affinity purification.

## Target Details

Target:	FAM50A
Alternative Name:	FAM50A ( <a href="#">FAM50A Products</a> )

## Target Details

Background:	May be a DNA-binding protein or transcriptional factor.
Molecular Weight:	40242
NCBI Accession:	<a href="#">NP_004690</a>
UniProt:	<a href="#">Q14320</a>

## Application Details

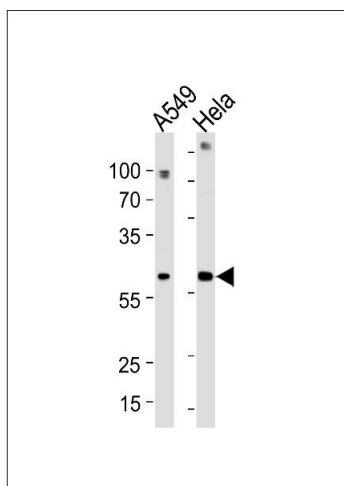
Application Notes:	IF: 1:25. WB: 1:1000
Restrictions:	For Research Use only

## Handling

Format:	Liquid
Buffer:	Purified polyclonal antibody supplied in PBS with 0.09 % (W/V) sodium azide.
Preservative:	Sodium azide
Precaution of Use:	This product contains Sodium azide: a POISONOUS AND HAZARDOUS SUBSTANCE which should be handled by trained staff only.
Storage:	4 °C, -20 °C
Expiry Date:	6 months

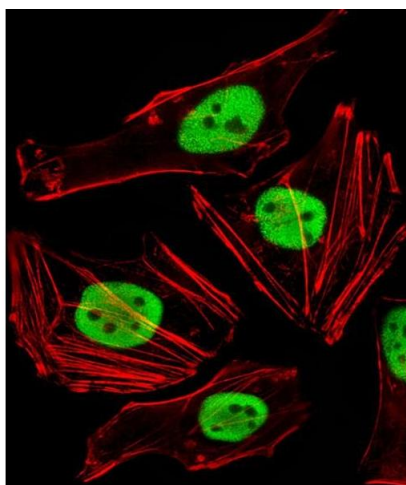
## Publications

Product cited in:	<p>Choudhary, Kumar, Gnad, Nielsen, Rehman, Walther, Olsen, Mann: "Lysine acetylation targets protein complexes and co-regulates major cellular functions." in: <b>Science (New York, N.Y.)</b>, Vol. 325, Issue 5942, pp. 834-40, (2009) (<a href="#">PubMed</a>).</p> <p>Dickeson, Helmkamp, Yarbrough: "Sequence of a human cDNA encoding phosphatidylinositol transfer protein and occurrence of a related sequence in widely divergent eukaryotes." in: <b>Gene</b>, Vol. 142, Issue 2, pp. 301-5, (1994) (<a href="#">PubMed</a>).</p>
-------------------	--



### Western Blotting

**Image 1.** FA Antibody (C-term) (ABIN1881334 and ABIN2843384) western blot analysis in A549, HeLa cell line lysates (35 µg/lane). This demonstrates the FA antibody detected the FA protein (arrow).



### Immunofluorescence

**Image 2.** Fluorescent image of HeLa cells stained with FA Antibody (C-term) (ABIN1881334 and ABIN2843384). (ABIN1881334 and ABIN2843384) was diluted at 1:25 dilution. An Alexa Fluor 488-conjugated goat anti-rabbit IgG at 1:400 dilution was used as the secondary antibody (green). Cytoplasmic actin was counterstained with Alexa Fluor® 555 conjugated with Phalloidin (red).