

Datasheet for ABIN1881336
anti-FANCL antibody (C-Term)[Go to Product page](#)

1 Image

5 Publications

Overview

Quantity:	400 µL
Target:	FANCL
Binding Specificity:	AA 274-302, C-Term
Reactivity:	Human
Host:	Rabbit
Clonality:	Polyclonal
Conjugate:	This FANCL antibody is un-conjugated
Application:	Western Blotting (WB)

Product Details

Immunogen:	This FANCL antibody is generated from rabbits immunized with a KLH conjugated synthetic peptide between 274-302 amino acids from the C-terminal region of human FANCL.
Clone:	RB23901
Isotype:	Ig Fraction
Purification:	This antibody is purified through a protein A column, followed by peptide affinity purification.

Target Details

Target:	FANCL
Alternative Name:	FANCL (FANCL Products)
Background:	The Fanconi anemia complementation group (FANC) currently includes FANCA, FANCB,

Target Details

FANCC, FANCD1 (also called BRCA2), FANCD2, FANCE, FANCF, FANCG, FANCI, FANCIJ (also called BRIP1), FANCL, FANCM and FANCN (also called PALB2). The previously defined group FANCH is the same as FANCA. Fanconi anemia is a genetically heterogeneous recessive disorder characterized by cytogenetic instability, hypersensitivity to DNA crosslinking agents, increased chromosomal breakage, and defective DNA repair. The members of the Fanconi anemia complementation group do not share sequence similarity, they are related by their assembly into a common nuclear protein complex. This gene encodes the protein for complementation group L. Alternative splicing results in two transcript variants encoding different isoforms.

Molecular Weight: 42905

NCBI Accession: [NP_001108108](#), [NP_060532](#)

UniProt: [Q9NW38](#)

Pathways: [DNA Damage Repair](#)

Application Details

Application Notes: WB: 1:1000

Restrictions: For Research Use only

Handling

Format: Liquid

Buffer: Purified polyclonal antibody supplied in PBS with 0.09 % (W/V) sodium azide.

Preservative: Sodium azide

Precaution of Use: This product contains Sodium azide: a POISONOUS AND HAZARDOUS SUBSTANCE which should be handled by trained staff only.

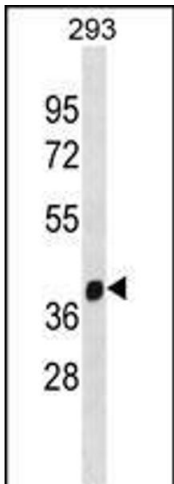
Storage: 4 °C, -20 °C

Expiry Date: 6 months

Publications

Product cited in: Si, Ali, Latip, Fauzi, Budin, Zainalabidin: "Roselle is cardioprotective in diet-induced obesity rat model with myocardial infarction." in: **Life sciences**, Vol. 191, pp. 157-165, (2017) ([PubMed](#)).

Yida, Imam, Ismail, Ooi, Sarega, Azmi, Ismail, Chan, Hou, Yusuf: "Edible Bird's Nest Prevents High Fat Diet-Induced Insulin Resistance in Rats." in: **Journal of diabetes research**, Vol. 2015, pp. 760535, (2016) ([PubMed](#)).



Western Blotting

Image 1. FANCL Antibody (C-term) (ABIN1881336 and ABIN2838614) western blot analysis in 293 cell line lysates (35 µg/lane). This demonstrates the FANCL antibody detected the FANCL protein (arrow).