



Datasheet for ABIN1881344
anti-FCHSD2 antibody (C-Term)



[Go to Product page](#)

1 Image

4 Publications

Overview

Quantity:	400 µL
Target:	FCHSD2
Binding Specificity:	AA 706-734, C-Term
Reactivity:	Human
Host:	Rabbit
Clonality:	Polyclonal
Conjugate:	This FCHSD2 antibody is un-conjugated
Application:	Western Blotting (WB)

Product Details

Immunogen:	This FCSD2 antibody is generated from rabbits immunized with a KLH conjugated synthetic peptide between 706-734 amino acids from the C-terminal region of human FCSD2.
Clone:	RB42675
Isotype:	Ig Fraction
Purification:	This antibody is purified through a protein A column, followed by peptide affinity purification.

Target Details

Target:	FCHSD2
Alternative Name:	FCSD2 (FCHSD2 Products)
Background:	The function of this protein is unknown.

Target Details

Molecular Weight: 84276

NCBI Accession: [NP_055639](#)

UniProt: [O94868](#)

Application Details

Application Notes: WB: 1:1000

Restrictions: For Research Use only

Handling

Format: Liquid

Buffer: Purified polyclonal antibody supplied in PBS with 0.09 % (W/V) sodium azide.

Preservative: Sodium azide

Precaution of Use: This product contains Sodium azide: a POISONOUS AND HAZARDOUS SUBSTANCE which should be handled by trained staff only.

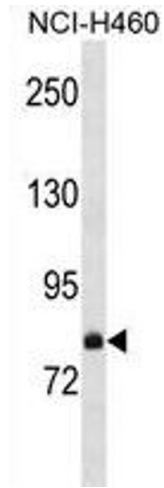
Storage: 4 °C,-20 °C

Expiry Date: 6 months

Publications

Product cited in: Si, Ali, Latip, Fauzi, Budin, Zainalabidin: "Roselle is cardioprotective in diet-induced obesity rat model with myocardial infarction." in: **Life sciences**, Vol. 191, pp. 157-165, (2017) ([PubMed](#)).

Yida, Imam, Ismail, Ooi, Sarega, Azmi, Ismail, Chan, Hou, Yusuf: "Edible Bird's Nest Prevents High Fat Diet-Induced Insulin Resistance in Rats." in: **Journal of diabetes research**, Vol. 2015, pp. 760535, (2016) ([PubMed](#)).



Western Blotting

Image 1. FCSD2 Antibody (C-term) (ABIN1881344 and ABIN2838984) western blot analysis in NCI- cell line lysates (35 µg/lane). This demonstrates the FCSD2 antibody detected the FCSD2 protein (arrow).