

Datasheet for ABIN1881391
anti-Granulin antibody (C-Term)[Go to Product page](#)

2 Images

3 Publications

Overview

Quantity:	400 µL
Target:	Granulin (GRN)
Binding Specificity:	AA 563-591, C-Term
Reactivity:	Human
Host:	Rabbit
Clonality:	Polyclonal
Conjugate:	This Granulin antibody is un-conjugated
Application:	Western Blotting (WB), Immunohistochemistry (Paraffin-embedded Sections) (IHC (p))

Product Details

Immunogen:	This GRN antibody is generated from rabbits immunized with a KLH conjugated synthetic peptide between 563-591 amino acids from the C-terminal region of human GRN.
Clone:	RB44397
Isotype:	Ig Fraction
Purification:	This antibody is purified through a protein A column, followed by peptide affinity purification.

Target Details

Target:	Granulin (GRN)
Alternative Name:	GRN (GRN Products)
Target Type:	Viral Protein

Target Details

Background:	Granulins have possible cytokine-like activity. They may play a role in inflammation, wound repair, and tissue remodeling. Granulin-4 promotes proliferation of the epithelial cell line A431 in culture while granulin-3 acts as an antagonist to granulin-4, inhibiting the growth.
Molecular Weight:	63544
NCBI Accession:	NP_002078
UniProt:	P28799

Application Details

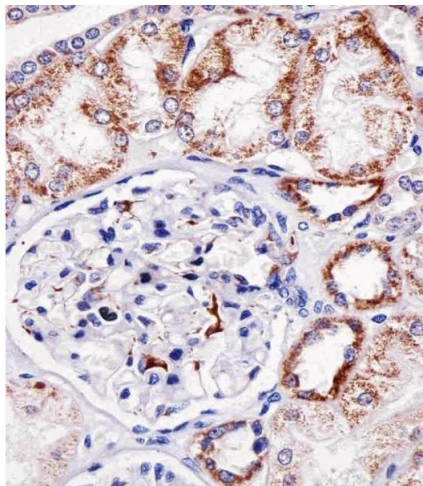
Application Notes:	WB: 1:1000. IHC-P: 1:25
Restrictions:	For Research Use only

Handling

Format:	Liquid
Buffer:	Purified polyclonal antibody supplied in PBS with 0.09 % (W/V) sodium azide.
Preservative:	Sodium azide
Precaution of Use:	This product contains Sodium azide: a POISONOUS AND HAZARDOUS SUBSTANCE which should be handled by trained staff only.
Storage:	4 °C,-20 °C
Expiry Date:	6 months

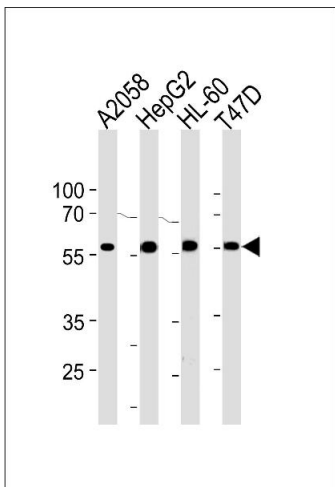
Publications

Product cited in:	Si, Ali, Latip, Fauzi, Budin, Zainalabidin: "Roselle is cardioprotective in diet-induced obesity rat model with myocardial infarction." in: Life sciences , Vol. 191, pp. 157-165, (2017) (PubMed).
	Yida, Imam, Ismail, Ooi, Sarega, Azmi, Ismail, Chan, Hou, Yusuf: "Edible Bird's Nest Prevents High Fat Diet-Induced Insulin Resistance in Rats." in: Journal of diabetes research , Vol. 2015, pp. 760535, (2016) (PubMed).



Immunohistochemistry (Paraffin-embedded Sections)

Image 1. Immunohistochemical analysis of paraffin-embedded H. kidney section using GRN Antibody (C-term) (ABIN1881391 and ABIN2843390). (ABIN1881391 and ABIN2843390) was diluted at 1:25 dilution. A undiluted biotinylated goat polyvalent antibody was used as the secondary, followed by DAB staining.



Western Blotting

Image 2. GRN Antibody (C-term) (ABIN1881391 and ABIN2843390) western blot analysis in ,HepG2,HL-60,T47D cell line lysates (35 µg/lane).This demonstrates the GRN antibody detected the GRN protein (arrow).