



[Go to Product page](#)

Datasheet for ABIN1881439
anti-HSPA1L antibody (C-Term)

1 Image

Overview

Quantity:	400 µL
Target:	HSPA1L
Binding Specificity:	AA 576-603, C-Term
Reactivity:	Human
Host:	Rabbit
Clonality:	Polyclonal
Conjugate:	This HSPA1L antibody is un-conjugated
Application:	Western Blotting (WB)

Product Details

Immunogen:	This HSPA1L antibody is generated from rabbits immunized with a KLH conjugated synthetic peptide between 576-603 amino acids from the C-terminal region of human HSPA1L.
Clone:	RB42434
Isotype:	Ig Fraction
Purification:	This antibody is purified through a protein A column, followed by peptide affinity purification.

Target Details

Target:	HSPA1L
Alternative Name:	HSPA1L (HSPA1L Products)
Background:	In cooperation with other chaperones, Hsp70s stabilize preexistent proteins against

Target Details

aggregation and mediate the folding of newly translated polypeptides in the cytosol as well as within organelles. These chaperones participate in all these processes through their ability to recognize nonnative conformations of other proteins. They bind extended peptide segments with a net hydrophobic character exposed by polypeptides during translation and membrane translocation, or following stress-induced damage.

Molecular Weight: 70404

UniProt: [Q53FA3](#)

Application Details

Application Notes: WB: 1:1000

Restrictions: For Research Use only

Handling

Format: Liquid

Buffer: Purified polyclonal antibody supplied in PBS with 0.09 % (W/V) sodium azide.

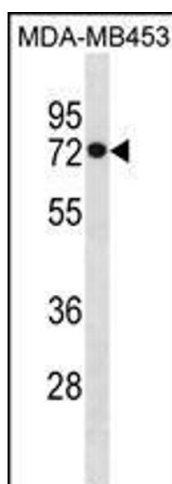
Preservative: Sodium azide

Precaution of Use: This product contains Sodium azide: a POISONOUS AND HAZARDOUS SUBSTANCE which should be handled by trained staff only.

Storage: 4 °C,-20 °C

Expiry Date: 6 months

Images



Western Blotting

Image 1. HSL Antibody (C-term) (ABIN1881439 and ABIN2850525) western blot analysis in MDA-M cell line lysates (35 µg/lane). This demonstrates the HSL antibody detected the HSL protein (arrow).