

Datasheet for ABIN1881471  
**anti-C-JUN antibody (AA 221-250)**[Go to Product page](#)

2 Images

3 Publications

## Overview

Quantity:	400 µL
Target:	C-JUN (JUN)
Binding Specificity:	AA 221-250
Reactivity:	Human
Host:	Rabbit
Clonality:	Polyclonal
Application:	Western Blotting (WB), Immunohistochemistry (Paraffin-embedded Sections) (IHC (p))

## Product Details

Immunogen:	This JUN antibody is generated from rabbits immunized with a KLH conjugated synthetic peptide between 221-250 amino acids from human JUN.
Clone:	RB11143
Isotype:	Ig Fraction
Predicted Reactivity:	B, C, M, Pig, Rat
Purification:	This antibody is purified through a protein A column, followed by peptide affinity purification.

## Target Details

Target:	C-JUN (JUN)
Alternative Name:	JUN ( <a href="#">JUN Products</a> )
Background:	JUN interacts directly with specific target DNA sequences to regulate gene expression.

## Target Details

Molecular Weight:	35676
NCBI Accession:	<a href="#">NP_002219</a>
UniProt:	<a href="#">P05412</a>
Pathways:	<a href="#">MAPK Signaling</a> , <a href="#">RTK Signaling</a> , <a href="#">WNT Signaling</a> , <a href="#">Fc-epsilon Receptor Signaling Pathway</a> , <a href="#">Activation of Innate immune Response</a> , <a href="#">Myometrial Relaxation and Contraction</a> , <a href="#">Skeletal Muscle Fiber Development</a> , <a href="#">Protein targeting to Nucleus</a> , <a href="#">Toll-Like Receptors Cascades</a> , <a href="#">Autophagy</a> , <a href="#">Signaling of Hepatocyte Growth Factor Receptor</a> , <a href="#">BCR Signaling</a> , <a href="#">S100 Proteins</a>

## Application Details

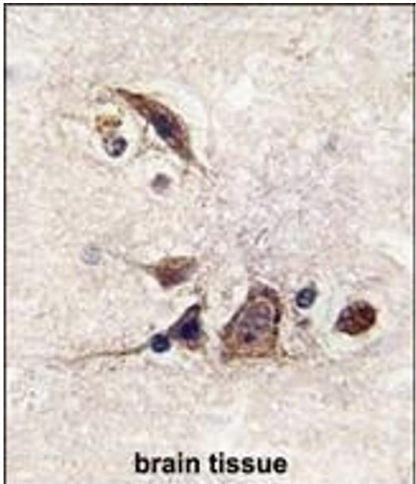
Application Notes:	WB: 1:1000. IHC-P: 1:10~50
Restrictions:	For Research Use only

## Handling

Format:	Liquid
Buffer:	Purified polyclonal antibody supplied in PBS with 0.09 % (W/V) sodium azide.
Preservative:	Sodium azide
Precaution of Use:	This product contains Sodium azide: a POISONOUS AND HAZARDOUS SUBSTANCE which should be handled by trained staff only.
Storage:	4 °C,-20 °C
Expiry Date:	6 months

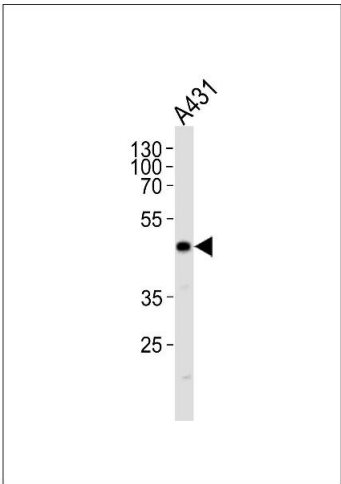
## Publications

Product cited in:	Mei, Li, Chu, Yiu, Lo: "The inhibitory effects of silver diamine fluoride at different concentrations on matrix metalloproteinases." in: <b>Dental materials : official publication of the Academy of Dental Materials</b> , Vol. 28, Issue 8, pp. 903-8, (2012) ( <a href="#">PubMed</a> ).
-------------------	--



Immunohistochemistry (Paraffin-embedded Sections)

**Image 1.** Formalin-fixed and paraffin-embedded human brain tissue reacted with JUN Antibody g , which was peroxidase-conjugated to the secondary antibody, followed by DAB staining. This data demonstrates the use of this antibody for immunohistochemistry, clinical relevance has not been evaluated.



Western Blotting

**Image 2.** JUN Antibody g western blot analysis in A431 cell line lysates (35 µg/lane).This demonstrates the JUN antibody detected the JUN protein (arrow).