

Datasheet for ABIN1881473
anti-KCNAB1 antibody (N-Term)[Go to Product page](#)

1 Image

4 Publications

Overview

Quantity:	400 µL
Target:	KCNAB1
Binding Specificity:	AA 15-44, N-Term
Reactivity:	Human
Host:	Rabbit
Clonality:	Polyclonal
Application:	Western Blotting (WB)

Product Details

Immunogen:	This KCNAB1 antibody is generated from rabbits immunized with a KLH conjugated synthetic peptide between 15-44 amino acids from the N-terminal region of human KCNAB1.
Clone:	RB40526
Isotype:	Ig Fraction
Purification:	This antibody is purified through a protein A column, followed by peptide affinity purification.

Target Details

Target:	KCNAB1
Alternative Name:	KCNAB1 (KCNAB1 Products)
Background:	Potassium channels represent the most complex class of voltage-gated ion channels from both functional and structural standpoints. Their diverse functions include regulating neurotransmitter release, heart rate, insulin secretion, neuronal excitability, epithelial electrolyte

Target Details

transport, smooth muscle contraction, and cell volume. Four sequence-related potassium channel genes - shaker, shaw, shab, and shal - have been identified in Drosophila, and each has been shown to have human homolog(s). This gene encodes a member of the potassium channel, voltage-gated, shaker-related subfamily. This member includes three distinct isoforms which are encoded by three alternatively spliced transcript variants of this gene. These three isoforms are beta subunits, which form heteromultimeric complex with alpha subunits and modulate the activity of the pore-forming alpha subunits.

Molecular Weight:	46563
NCBI Accession:	NP_003462 , NP_751891 , NP_751892
UniProt:	Q14722

Application Details

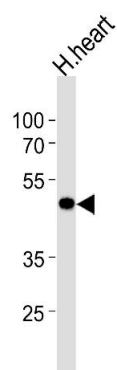
Application Notes:	WB: 1:1000
Restrictions:	For Research Use only

Handling

Format:	Liquid
Buffer:	Purified polyclonal antibody supplied in PBS with 0.09 % (W/V) sodium azide.
Preservative:	Sodium azide
Precaution of Use:	This product contains Sodium azide: a POISONOUS AND HAZARDOUS SUBSTANCE which should be handled by trained staff only.
Storage:	4 °C,-20 °C
Expiry Date:	6 months

Publications

Product cited in:	Mei, Li, Chu, Yiu, Lo: "The inhibitory effects of silver diamine fluoride at different concentrations on matrix metalloproteinases." in: Dental materials : official publication of the Academy of Dental Materials , Vol. 28, Issue 8, pp. 903-8, (2012) (PubMed).
-------------------	--



Western Blotting

Image 1. Western blot analysis of lysate from human heart tissue lysate, using KCNAB1 Antibody (N-term) (ABIN1881473 and ABIN2838394). (ABIN1881473 and ABIN2838394) was diluted at 1:1000 at each lane. A goat anti-rabbit IgG H&L(HRP) at 1:5000 dilution was used as the secondary antibody. Lysate at 35 µg per lane.