



[Go to Product page](#)

Datasheet for ABIN1881477

## anti-KCTD20 antibody (C-Term)

1 Image

3 Publications

### Overview

Quantity:	400 µL
Target:	KCTD20
Binding Specificity:	AA 313-341, C-Term
Reactivity:	Mouse
Host:	Rabbit
Clonality:	Polyclonal
Application:	Western Blotting (WB)

### Product Details

Immunogen:	This KCTD20 antibody is generated from rabbits immunized with a KLH conjugated synthetic peptide between 313-341 amino acids from the C-terminal region of human KCTD20.
Clone:	RB26081
Isotype:	Ig Fraction
Purification:	This antibody is purified through a protein A column, followed by peptide affinity purification.

### Target Details

Target:	KCTD20
Alternative Name:	KCTD20 ( <a href="#">KCTD20 Products</a> )
Background:	The function of this protein is unknown.
Molecular Weight:	47480

## Target Details

---

NCBI Accession: [NP\\_775833](#)

UniProt: [Q7Z5Y7](#)

## Application Details

---

Application Notes: WB: 1:1000

Restrictions: For Research Use only

## Handling

---

Format: Liquid

Buffer: Purified polyclonal antibody supplied in PBS with 0.09 % (W/V) sodium azide.

Preservative: Sodium azide

Precaution of Use: This product contains Sodium azide: a POISONOUS AND HAZARDOUS SUBSTANCE which should be handled by trained staff only.

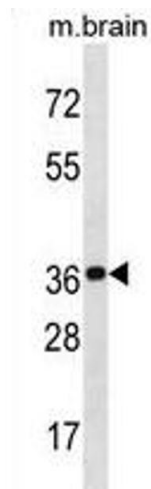
Storage: 4 °C, -20 °C

Expiry Date: 6 months

## Publications

---

Product cited in: Mei, Li, Chu, Yiu, Lo: "The inhibitory effects of silver diamine fluoride at different concentrations on matrix metalloproteinases." in: **Dental materials : official publication of the Academy of Dental Materials**, Vol. 28, Issue 8, pp. 903-8, (2012) ([PubMed](#)).



### Western Blotting

**Image 1.** KCTD20 Antibody (C-term) (ABIN1881477 and ABIN2838989) western blot analysis in mouse brain tissue lysates (35 µg/lane). This demonstrates the KCTD20 antibody detected the KCTD20 protein (arrow).