

Datasheet for ABIN1881480
anti-KISS1R antibody (AA 235-263)[Go to Product page](#)

2 Images

Overview

Quantity:	400 µL
Target:	KISS1R
Binding Specificity:	AA 235-263
Reactivity:	Human
Host:	Rabbit
Clonality:	Polyclonal
Application:	Western Blotting (WB)

Product Details

Immunogen:	This KISS1R antibody is generated from rabbits immunized with a KLH conjugated synthetic peptide between 235-263 amino acids from the Central region of human KISS1R.
Clone:	RB40407
Isotype:	Ig Fraction
Purification:	This antibody is purified through a protein A column, followed by peptide affinity purification.

Target Details

Target:	KISS1R
Alternative Name:	KISS1R (KISS1R Products)
Background:	Receptor for metastin (kisspeptin-54 or kp-54), a C-terminally amidated peptide of KiSS1. KiSS1 is a metastasis suppressor protein that suppresses metastases in malignant melanomas and in some breast carcinomas without affecting tumorigenicity. The metastasis suppressor

Target Details

properties may be mediated in part by cell cycle arrest and induction of apoptosis in malignant cells. The receptor is essential for normal gonadotropin-released hormone physiology and for puberty. The hypothalamic KiSS1/KISS1R system is a pivotal factor in central regulation of the gonadotropic axis at puberty and in adulthood. The receptor is also probably involved in the regulation and fine-tuning of trophoblast invasion generated by the trophoblast itself. Analysis of the transduction pathways activated by the receptor identifies coupling to phospholipase C and intracellular calcium release through pertussis toxin-insensitive G(q) proteins.

Molecular Weight:	42586
-------------------	-------

NCBI Accession:	NP_115940
-----------------	---------------------------

UniProt:	Q969F8
----------	------------------------

Application Details

Application Notes:	WB: 1:1000. WB: 1:1000
--------------------	------------------------

Restrictions:	For Research Use only
---------------	-----------------------

Handling

Format:	Liquid
---------	--------

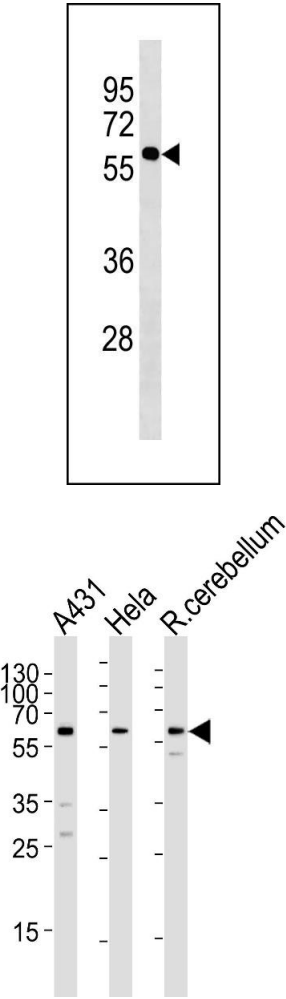
Buffer:	Purified polyclonal antibody supplied in PBS with 0.09 % (W/V) sodium azide.
---------	--

Preservative:	Sodium azide
---------------	--------------

Precaution of Use:	This product contains Sodium azide: a POISONOUS AND HAZARDOUS SUBSTANCE which should be handled by trained staff only.
--------------------	--

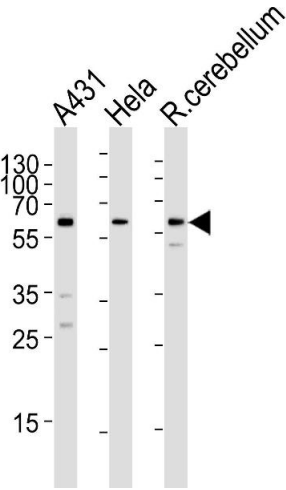
Storage:	4 °C,-20 °C
----------	-------------

Expiry Date:	6 months
--------------	----------



Western Blotting

Image 1. KISS1R Antibody (Center) (ABIN1881480 and ABIN2843217) western blot analysis in HepG2 cell line lysates (35 µg/lane). This demonstrates the KISS1R antibody detected the KISS1R protein (arrow).



Western Blotting

Image 2. Western blot analysis of lysates from A431, Hela cell line and rat cerebellum tissue lysate (from left to right), using KISS1R Antibody (Center) (ABIN1881480 and ABIN2843217). (ABIN1881480 and ABIN2843217) was diluted at 1:1000 at each lane. A goat anti-rabbit IgG H&L(HRP) at 1:5000 dilution was used as the secondary antibody. Lysates at 35 µg per lane.