

Datasheet for ABIN1881486
anti-KRT6A antibody (AA 212-240)[Go to Product page](#)**1** Image**5** Publications

Overview

Quantity:	400 µL
Target:	KRT6A
Binding Specificity:	AA 212-240
Reactivity:	Mouse
Host:	Rabbit
Clonality:	Polyclonal
Application:	Western Blotting (WB)

Product Details

Immunogen:	This Mouse Krt6a antibody is generated from rabbits immunized with a KLH conjugated synthetic peptide between 212-240 amino acids from the Central region of mouse Krt6a.
Clone:	RB40714
Isotype:	IgG
Purification:	This antibody is purified through a protein A column, followed by peptide affinity purification.

Target Details

Target:	KRT6A
Alternative Name:	Krt6a (KRT6A Products)
Background:	Keratins 6 and 16 are expressed in keratinocytes, which are undergoing rapid turnover in the suprabasal region (also known as hyperproliferation related keratins). Keratin 6 is found in hair follicles, neck squamous cell carcinomas, suprabasal cells of a variety of internal stratified

Target Details

epithelia, in epidermis, in both normal and hyperproliferative situations. Epidermal injury results in activation of keratinocytes which express CK6 and CK16. CK6 is strongly expressed in about 75 % of head and neck squamous cell carcinomas. Expression of CK6 is particularly associated with differentiation. There are at least six isoforms of human type II keratin 6 (K6), K6A being the most abundant representing about 77 % of all forms found in epithelia.

Molecular Weight: 59335

NCBI Accession: [NP_032502](#)

UniProt: [P50446](#)

Application Details

Application Notes: WB: 1:1000

Restrictions: For Research Use only

Handling

Format: Liquid

Buffer: Purified polyclonal antibody supplied in PBS with 0.09 % (W/V) sodium azide.

Preservative: Sodium azide

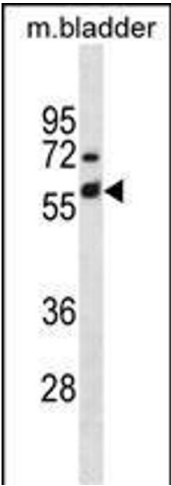
Precaution of Use: This product contains Sodium azide: a POISONOUS AND HAZARDOUS SUBSTANCE which should be handled by trained staff only.

Storage: 4 °C, -20 °C

Expiry Date: 6 months

Publications

Product cited in: Mei, Li, Chu, Yiu, Lo: "The inhibitory effects of silver diamine fluoride at different concentrations on matrix metalloproteinases." in: **Dental materials : official publication of the Academy of Dental Materials**, Vol. 28, Issue 8, pp. 903-8, (2012) ([PubMed](#)).



Western Blotting

Image 1. Mouse Krt6a Antibody (Center) (ABIN1881486 and ABIN2838719) western blot analysis in mouse bladder tissue lysates (35 µg/lane). This demonstrates the Mouse Krt6a antibody detected the Mouse Krt6a protein (arrow).