

Datasheet for ABIN1881487  
**anti-Keratin 72 antibody (AA 313-342)**[Go to Product page](#)

1 Image

2 Publications

## Overview

Quantity:	400 µL
Target:	Keratin 72 (KRT72)
Binding Specificity:	AA 313-342
Reactivity:	Human
Host:	Rabbit
Clonality:	Polyclonal
Application:	Western Blotting (WB)

## Product Details

Immunogen:	This KRT72 antibody is generated from rabbits immunized with a KLH conjugated synthetic peptide between 313-342 amino acids from the Central region of human KRT72.
Clone:	RB40960
Isotype:	Ig Fraction
Predicted Reactivity:	B
Purification:	This antibody is purified through a protein A column, followed by peptide affinity purification.

## Target Details

Target:	Keratin 72 (KRT72)
Alternative Name:	KRT72 ( <a href="#">KRT72 Products</a> )
Background:	Keratins are intermediate filament proteins responsible for the structural integrity of epithelial

## Target Details

cells. The type II keratins consist of basic or neutral proteins which are arranged in pairs of heterotypic keratin chains coexpressed during differentiation of simple and stratified epithelial tissues. This gene encodes a type II keratin that is specifically expressed in the inner root sheath of hair follicles. The type II keratins are clustered in a region of chromosome 12q12-q13. Multiple transcript variants encoding different isoforms have been found for this gene.

Molecular Weight: 55877

NCBI Accession: [NP\\_001139697](#), [NP\\_001139698](#), [NP\\_542785](#)

UniProt: [Q14CN4](#)

## Application Details

Application Notes: WB: 1:1000

Restrictions: For Research Use only

## Handling

Format: Liquid

Buffer: Purified polyclonal antibody supplied in PBS with 0.09 % (W/V) sodium azide.

Preservative: Sodium azide

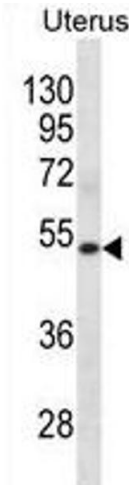
Precaution of Use: This product contains Sodium azide: a POISONOUS AND HAZARDOUS SUBSTANCE which should be handled by trained staff only.

Storage: 4 °C, -20 °C

Expiry Date: 6 months

## Publications

Product cited in: Mei, Li, Chu, Yiu, Lo: "The inhibitory effects of silver diamine fluoride at different concentrations on matrix metalloproteinases." in: **Dental materials : official publication of the Academy of Dental Materials**, Vol. 28, Issue 8, pp. 903-8, (2012) ([PubMed](#)).



Western Blotting

**Image 1.** KRT72 Antibody (Center) (ABIN1881487 and ABIN2838797) western blot analysis in human Uterus tissue lysates (35 µg/lane). This demonstrates the KRT72 antibody detected the KRT72 protein (arrow).