



Datasheet for ABIN1881488
anti-Keratin 86 antibody (AA 300-327)



[Go to Product page](#)

1 Image

4 Publications

Overview

Quantity:	400 µL
Target:	Keratin 86 (KRT86)
Binding Specificity:	AA 300-327
Reactivity:	Human
Host:	Rabbit
Clonality:	Polyclonal
Application:	Western Blotting (WB)

Product Details

Immunogen:	This KRT86 antibody is generated from rabbits immunized with a KLH conjugated synthetic peptide between 300-327 amino acids from the Central region of human KRT86.
Clone:	RB42669
Isotype:	Ig Fraction
Predicted Reactivity:	Sh, B, M
Purification:	This antibody is purified through a protein A column, followed by peptide affinity purification.

Target Details

Target:	Keratin 86 (KRT86)
Alternative Name:	KRT86 (KRT86 Products)
Background:	The protein encoded by this gene is a member of the keratin gene family. As a type II hair

Target Details

keratin, it is a basic protein which heterodimerizes with type I keratins to form hair and nails. The type II hair keratins are clustered in a region of chromosome 12q13 and are grouped into two distinct subfamilies based on structure similarity. One subfamily, consisting of KRTHB1, KRTHB3, and KRTHB6, is highly related. The other less-related subfamily includes KRTHB2, KRTHB4, and KRTHB5. All hair keratins are expressed in the hair follicle, this hair keratin, as well as KRTHB1 and KRTHB3, is found primarily in the hair cortex. Mutations in this gene and KRTHB1 have been observed in patients with a rare dominant hair disease, monilethrix.

Molecular Weight: 53501

NCBI Accession: [NP_002275](#)

UniProt: [O43790](#)

Application Details

Application Notes: WB: 1:1000

Restrictions: For Research Use only

Handling

Format: Liquid

Buffer: Purified polyclonal antibody supplied in PBS with 0.09 % (W/V) sodium azide.

Preservative: Sodium azide

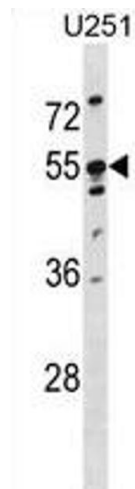
Precaution of Use: This product contains Sodium azide: a POISONOUS AND HAZARDOUS SUBSTANCE which should be handled by trained staff only.

Storage: 4 °C,-20 °C

Expiry Date: 6 months

Publications

Product cited in: Mei, Li, Chu, Yiu, Lo: "The inhibitory effects of silver diamine fluoride at different concentrations on matrix metalloproteinases." in: **Dental materials : official publication of the Academy of Dental Materials**, Vol. 28, Issue 8, pp. 903-8, (2012) ([PubMed](#)).



Western Blotting

Image 1. KRT86 Antibody (Center) (ABIN1881488 and ABIN2838982) western blot analysis in cell line lysates (35 µg/lane). This demonstrates the KRT86 antibody detected the KRT86 protein (arrow).