



[Go to Product page](#)

Datasheet for ABIN1881496

## anti-LHX4 antibody (AA 133-161)

1 Image

4 Publications

### Overview

Quantity:	400 µL
Target:	LHX4
Binding Specificity:	AA 133-161
Reactivity:	Human
Host:	Rabbit
Clonality:	Polyclonal
Application:	Western Blotting (WB)

### Product Details

Immunogen:	This LHX4 antibody is generated from rabbits immunized with a KLH conjugated synthetic peptide between 133-161 amino acids from the Central region of human LHX4.
Clone:	RB30670
Isotype:	Ig Fraction
Predicted Reactivity:	M
Purification:	This antibody is purified through a protein A column, followed by peptide affinity purification.

### Target Details

Target:	LHX4
Alternative Name:	LHX4 ( <a href="#">LHX4 Products</a> )
Background:	This gene encodes a member of a large protein family which contains the LIM domain, a unique

## Target Details

---

cysteine-rich zinc-binding domain. The encoded protein may function as a transcriptional regulator and be involved in control of differentiation and development of the pituitary gland. Mutations in this gene are associated with syndromic short stature and pituitary and hindbrain defects. An alternative splice variant has been described but its biological nature has not been determined.

Molecular Weight: 43124

NCBI Accession: [NP\\_203129](#)

UniProt: [Q969G2](#)

## Application Details

---

Application Notes: WB: 1:1000

Restrictions: For Research Use only

## Handling

---

Format: Liquid

Buffer: Purified polyclonal antibody supplied in PBS with 0.09 % (W/V) sodium azide.

Preservative: Sodium azide

Precaution of Use: This product contains Sodium azide: a POISONOUS AND HAZARDOUS SUBSTANCE which should be handled by trained staff only.

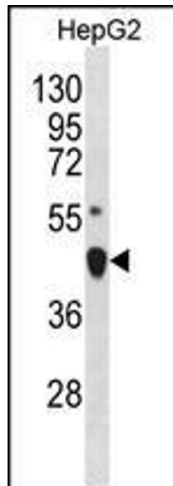
Storage: 4 °C,-20 °C

Expiry Date: 6 months

## Publications

---

Product cited in: Mei, Li, Chu, Yiu, Lo: "The inhibitory effects of silver diamine fluoride at different concentrations on matrix metalloproteinases." in: **Dental materials : official publication of the Academy of Dental Materials**, Vol. 28, Issue 8, pp. 903-8, (2012) ([PubMed](#)).



### Western Blotting

**Image 1.** LHX4 Antibody (Center) (ABIN1881496 and ABIN2838621) western blot analysis in HepG2 cell line lysates (35 µg/lane). This demonstrates the LHX4 antibody detected the LHX4 protein (arrow).