

Datasheet for ABIN1881502
anti-LMAN2L antibody (C-Term)[Go to Product page](#)

1 Image

Overview

Quantity:	400 µL
Target:	LMAN2L
Binding Specificity:	AA 322-348, C-Term
Reactivity:	Human
Host:	Rabbit
Clonality:	Polyclonal
Conjugate:	This LMAN2L antibody is un-conjugated
Application:	Western Blotting (WB)

Product Details

Immunogen:	This LMAN2L antibody is generated from rabbits immunized with a KLH conjugated synthetic peptide between 322-348 amino acids from the C-terminal region of human LMAN2L.
Clone:	RB42937
Isotype:	Ig Fraction
Purification:	This antibody is purified through a protein A column, followed by peptide affinity purification.

Target Details

Target:	LMAN2L
Alternative Name:	LMAN2L (LMAN2L Products)
Background:	May be involved in the regulation of export from the endoplasmic reticulum of a subset of

Target Details

glycoproteins. May function as a regulator of ERGIC-53.

Molecular Weight:	39711
NCBI Accession:	NP_001135764 , NP_110432
UniProt:	Q9H0V9

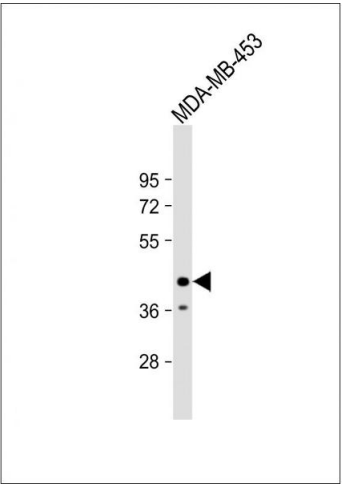
Application Details

Application Notes:	WB: 1:1000
Restrictions:	For Research Use only

Handling

Format:	Liquid
Buffer:	Purified polyclonal antibody supplied in PBS with 0.09 % (W/V) sodium azide.
Preservative:	Sodium azide
Precaution of Use:	This product contains Sodium azide: a POISONOUS AND HAZARDOUS SUBSTANCE which should be handled by trained staff only.
Storage:	4 °C,-20 °C
Expiry Date:	6 months

Images



Western Blotting

Image 1. Anti-LN2L Antibody (C-term) at 1:1000 dilution + MDA-MB-453 whole cell lysate Lysates/proteins at 20 µg per lane. Secondary Goat Anti-Rabbit IgG, (H+L), Peroxidase conjugated at 1/10000 dilution. Predicted band size : 40 kDa
Blocking/Dilution buffer: 5 % NFDM/TBST.