

Datasheet for ABIN1881503  
**anti-LM07 antibody (AA 616-644)**[Go to Product page](#)

## 1 Image

## Overview

Quantity:	400 µL
Target:	LM07
Binding Specificity:	AA 616-644
Reactivity:	Human
Host:	Rabbit
Clonality:	Polyclonal
Conjugate:	This LM07 antibody is un-conjugated
Application:	Western Blotting (WB)

## Product Details

Immunogen:	This LM07 antibody is generated from rabbits immunized with a KLH conjugated synthetic peptide between 616-644 amino acids from the Central region of human LM07.
Clone:	RB41024
Isotype:	Ig Fraction
Purification:	This antibody is purified through a protein A column, followed by peptide affinity purification.

## Target Details

Target:	LM07
Alternative Name:	LM07 ( <a href="#">LM07 Products</a> )
Background:	LM07 contains a calponin homology (CH) domain, a PDZ domain, and a LIM domain. An F-box

## Target Details

(FBX) domain is present in alternative splice variants. Members of the LIM protein family carry the LIM domain, a unique cysteine-rich zinc-binding domain. Members of the FBX protein family are involved in protein-protein interactions. LM07 may be involved in protein-protein interactions. Multiple alternative splice variants have been described but their full-length sequences have not been determined.

Molecular Weight: 192696

NCBI Accession: [NP\\_005349](#), [NP\\_056667](#)

UniProt: [Q8WWI1](#)

## Application Details

Application Notes: WB: 1:1000

Restrictions: For Research Use only

## Handling

Format: Liquid

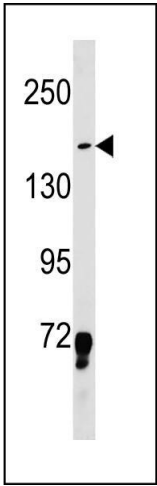
Buffer: Purified polyclonal antibody supplied in PBS with 0.09 % (W/V) sodium azide.

Preservative: Sodium azide

Precaution of Use: This product contains Sodium azide: a POISONOUS AND HAZARDOUS SUBSTANCE which should be handled by trained staff only.

Storage: 4 °C, -20 °C

Expiry Date: 6 months



Western Blotting

**Image 1.** LM07 Antibody (Center) (ABIN1881503 and ABIN2843230) western blot analysis in K562 cell line lysates (35 µg/lane). This demonstrates the LM07 antibody detected the LM07 protein (arrow).