



[Go to Product page](#)

Datasheet for ABIN1881509

anti-LRRC19 antibody (C-Term)

1 Image

1 Publication

Overview

Quantity:	400 µL
Target:	LRRC19
Binding Specificity:	AA 289-318, C-Term
Reactivity:	Human
Host:	Rabbit
Clonality:	Polyclonal
Application:	Western Blotting (WB)

Product Details

Immunogen:	This LRRC19 antibody is generated from rabbits immunized with a KLH conjugated synthetic peptide between 289-318 amino acids from the C-terminal region of human LRRC19.
Clone:	RB41615
Isotype:	Ig Fraction
Purification:	This antibody is purified through a protein A column, followed by peptide affinity purification.

Target Details

Target:	LRRC19
Alternative Name:	LRRC19 (LRRC19 Products)
Background:	The function of this protein is unknown.
NCBI Accession:	NP_075052

Target Details

UniProt: [Q9H756](#)

Application Details

Application Notes: WB: 1:1000

Restrictions: For Research Use only

Handling

Format: Liquid

Buffer: Purified polyclonal antibody supplied in PBS with 0.09 % (W/V) sodium azide.

Preservative: Sodium azide

Precaution of Use: This product contains Sodium azide: a POISONOUS AND HAZARDOUS SUBSTANCE which should be handled by trained staff only.

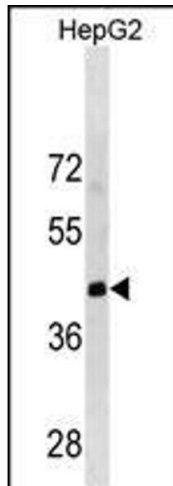
Storage: 4 °C,-20 °C

Expiry Date: 6 months

Publications

Product cited in: Zampagni, Cascella, Casamenti, Grossi, Evangelisti, Wright, Becatti, Liguri, Mannini, Campioni, Chiti, Cecchi: "A comparison of the biochemical modifications caused by toxic and non-toxic protein oligomers in cells." in: **Journal of cellular and molecular medicine**, Vol. 15, Issue 10, pp. 2106-16, (2011) ([PubMed](#)).

Liao, Lasbury, Wang, Zhang, Durant, Murakami, Matsufuji, Lee: "Pneumocystis mediates overexpression of antizyme inhibitor resulting in increased polyamine levels and apoptosis in alveolar macrophages." in: **The Journal of biological chemistry**, Vol. 284, Issue 12, pp. 8174-84, (2009) ([PubMed](#)).



Western Blotting

Image 1. LRRC19 Antibody (C-term) (ABIN1881509 and ABIN2838841) western blot analysis in HepG2 cell line lysates (35 µg/lane). This demonstrates the LRRC19 antibody detected the LRRC19 protein (arrow).