

Datasheet for ABIN1881512
anti-LRRC8A antibody (C-Term)[Go to Product page](#)

2 Images

2 Publications

Overview

Quantity:	400 µL
Target:	LRRC8A
Binding Specificity:	AA 782-810, C-Term
Reactivity:	Human, Mouse
Host:	Rabbit
Clonality:	Polyclonal
Conjugate:	This LRRC8A antibody is un-conjugated
Application:	Western Blotting (WB)

Product Details

Immunogen:	This LRRC8A antibody is generated from rabbits immunized with a KLH conjugated synthetic peptide between 782-810 amino acids from the C-terminal region of human LRRC8A.
Clone:	RB30632
Isotype:	Ig Fraction
Predicted Reactivity:	Rat
Purification:	This antibody is purified through a protein A column, followed by peptide affinity purification.

Target Details

Target:	LRRC8A
Alternative Name:	LRRC8A (LRRC8A Products)

Target Details

Background: This gene encodes a protein belonging to the leucine-rich repeat family of proteins, which are involved in diverse biological processes, including cell adhesion, cellular trafficking, and hormone-receptor interactions. This family member is a putative four-pass transmembrane protein that plays a role in B cell development. Defects in this gene cause autosomal dominant non-Bruton type agammaglobulinemia, an immunodeficiency disease resulting from defects in B cell maturation. Multiple alternatively spliced transcript variants, which encode the same protein, have been identified for this gene.

Molecular Weight: 94199

NCBI Accession: [NP_001120716](#), [NP_001120717](#), [NP_062540](#)

UniProt: [Q8IWT6](#)

Application Details

Application Notes: WB: 1:2000

Restrictions: For Research Use only

Handling

Format: Liquid

Buffer: Purified polyclonal antibody supplied in PBS with 0.09 % (W/V) sodium azide.

Preservative: Sodium azide

Precaution of Use: This product contains Sodium azide: a POISONOUS AND HAZARDOUS SUBSTANCE which should be handled by trained staff only.

Storage: 4 °C,-20 °C

Expiry Date: 6 months

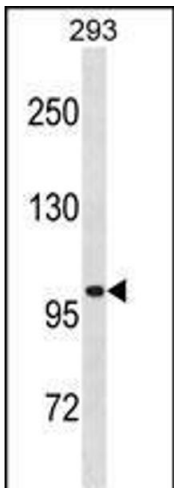
Publications

Product cited in: Xiang, Jiang, Liu, Zhang, Zhu: "hMan2c1 transgene promotes tumor progress in mice." in: **Transgenic research**, Vol. 19, Issue 1, pp. 67-75, (2010) ([PubMed](#)).

Tian, Ju, Zhou, Liu, Zhu: "Inhibition of alpha-mannosidase Man2c1 gene expression suppresses growth of esophageal carcinoma cells through mitotic arrest and apoptosis." in: **Cancer science**, Vol. 99, Issue 12, pp. 2428-34, (2008) ([PubMed](#)).

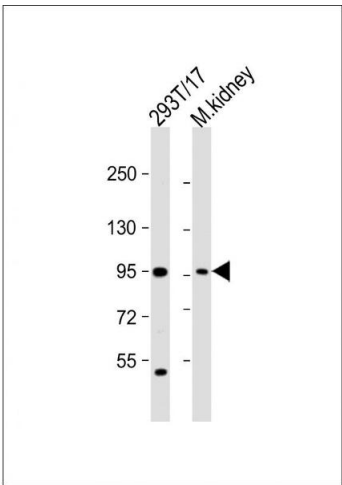
Qu, Ju, Chen, Shi, Xiang, Zhou, Tian, Liu, Zhu: "Inhibition of the alpha-mannosidase Man2c1 gene expression enhances adhesion of Jurkat cells." in: **Cell research**, Vol. 16, Issue 7, pp. 622-31, (2006) ([PubMed](#)).

Images



Western Blotting

Image 1. LRRC8A Antibody (C-term) (ABIN1881512 and ABIN2838618) western blot analysis in 293 cell line lysates (35 µg/lane). This demonstrates the LRRC8A antibody detected the LRRC8A protein (arrow).



Western Blotting

Image 2. All lanes : Anti-LRRC8A Antibody (C-term) at 1:2000 dilution Lane 1: 293T/17 whole cell lysate Lane 2: mouse kidney lysate Lysates/proteins at 20 µg per lane. Secondary Goat Anti-Rabbit IgG, (H+L), Peroxidase conjugated at 1/10000 dilution. Predicted band size : 94 kDa Blocking/Dilution buffer: 5 % NFDm/TBST.