

Datasheet for ABIN1881515  
**anti-Cyclin B1 antibody (AA 103-130)**



[Go to Product page](#)

3 Images

## Overview

Quantity:	400 µL
Target:	Cyclin B1 (CCNB1)
Binding Specificity:	AA 103-130
Reactivity:	Mouse
Host:	Rabbit
Clonality:	Polyclonal
Conjugate:	This Cyclin B1 antibody is un-conjugated
Application:	Western Blotting (WB), Immunohistochemistry (Paraffin-embedded Sections) (IHC (p))

## Product Details

Immunogen:	This Mouse CCNB1 antibody is generated from rabbits immunized with a KLH conjugated synthetic peptide between 103-130 amino acids from the Central region of mouse CCNB1.
Clone:	RB42994
Isotype:	Ig Fraction
Predicted Reactivity:	Ha
Purification:	This antibody is purified through a protein A column, followed by peptide affinity purification.

## Target Details

Target:	Cyclin B1 (CCNB1)
Alternative Name:	CCNB1 ( <a href="#">CCNB1 Products</a> )

## Target Details

Background:	Essential for the control of the cell cycle at the G2/M (mitosis) transition.
Molecular Weight:	48052
NCBI Accession:	<a href="#">NP_758505</a>
UniProt:	<a href="#">P24860</a>
Pathways:	<a href="#">Cell Division Cycle</a> , <a href="#">AMPK Signaling</a> , <a href="#">Mitotic G1-G1/S Phases</a> , <a href="#">M Phase</a>

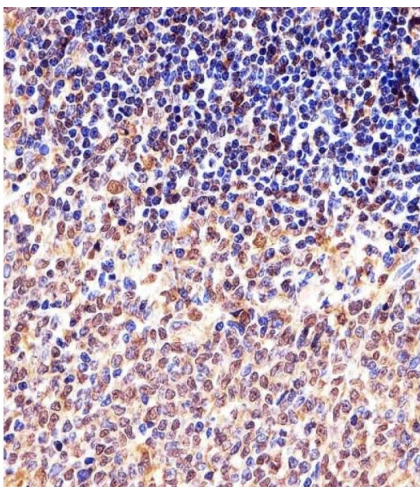
## Application Details

Application Notes:	WB: 1:1000. IHC-P: 1:25. IHC-P: 1:25
Restrictions:	For Research Use only

## Handling

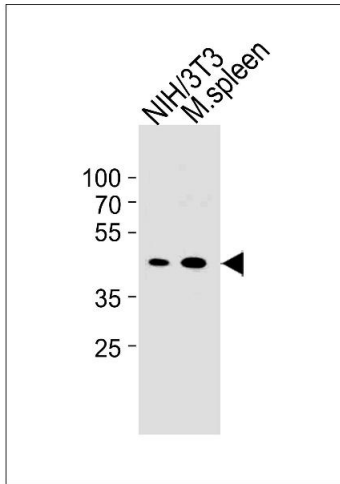
Format:	Liquid
Buffer:	Purified polyclonal antibody supplied in PBS with 0.09 % (W/V) sodium azide.
Preservative:	Sodium azide
Precaution of Use:	This product contains Sodium azide: a POISONOUS AND HAZARDOUS SUBSTANCE which should be handled by trained staff only.
Storage:	4 °C,-20 °C
Expiry Date:	6 months

## Images



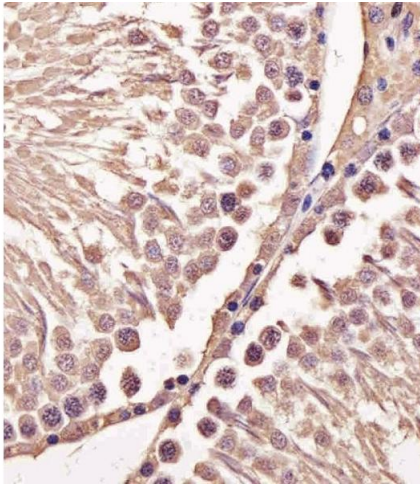
### Immunohistochemistry (Paraffin-embedded Sections)

**Image 1.** Immunohistochemical analysis of paraffin-embedded M. spleen section using M CCNB1 Antibody (Center /) (ABIN1881515 and ABIN2843319). (ABIN1881515 and ABIN2843319) was diluted at 1:25 dilution. A undiluted biotinylated goat polyvalent antibody was used as the secondary, followed by DAB staining.



### Western Blotting

**Image 2.** Mouse CCNB1 Antibody (Center /) (ABIN1881515 and ABIN2843319) western blot analysis in mouse NIH/3T3 cell line and mouse spleen tissue lysates (35 µg/lane). This demonstrates the mouse CCNB1 antibody detected the mouse CCNB1 protein (arrow).



### Immunohistochemistry (Paraffin-embedded Sections)

**Image 3.** Immunohistochemical analysis of paraffin-embedded M. testis section using M CCNB1 Antibody (Center /) (ABIN1881515 and ABIN2843319). (ABIN1881515 and ABIN2843319) was diluted at 1:25 dilution. A undiluted biotinylated goat polyvalent antibody was used as the secondary, followed by DAB staining.