

Datasheet for ABIN1881516
anti-GPR68 antibody (AA 200-225)[Go to Product page](#)

1 Image

2 Publications

Overview

Quantity:	400 µL
Target:	GPR68
Binding Specificity:	AA 200-225
Reactivity:	Mouse
Host:	Rabbit
Clonality:	Polyclonal
Conjugate:	This GPR68 antibody is un-conjugated
Application:	Western Blotting (WB)

Product Details

Immunogen:	This Mouse Gpr68 antibody is generated from rabbits immunized with a KLH conjugated synthetic peptide between 200-225 amino acids from the Central region of mouse Gpr68.
Isotype:	Ig Fraction
Predicted Reactivity:	B, H
Purification:	This antibody is purified through a protein A column, followed by peptide affinity purification.

Target Details

Target:	GPR68
Alternative Name:	Gpr68 (GPR68 Products)
Background:	Proton-sensing receptor involved in pH homeostasis. May represents an osteoblastic pH

Target Details

sensor regulating cell-mediated responses to acidosis in bone. Mediates its action by association with G proteins that stimulates inositol phosphate (IP) production or Ca(2+) mobilization. The receptor is almost silent at pH 7.8 but fully activated at pH 6.8. Function also as a metastasis suppressor gene in prostate cancer.

Molecular Weight: 41209

NCBI Accession: [NP_001171144](#), [NP_001171145](#), [NP_780702](#)

UniProt: [Q8BFQ3](#)

Application Details

Application Notes: WB: 1:1000

Restrictions: For Research Use only

Handling

Format: Liquid

Buffer: Purified polyclonal antibody supplied in PBS with 0.09 % (W/V) sodium azide.

Preservative: Sodium azide

Precaution of Use: This product contains Sodium azide: a POISONOUS AND HAZARDOUS SUBSTANCE which should be handled by trained staff only.

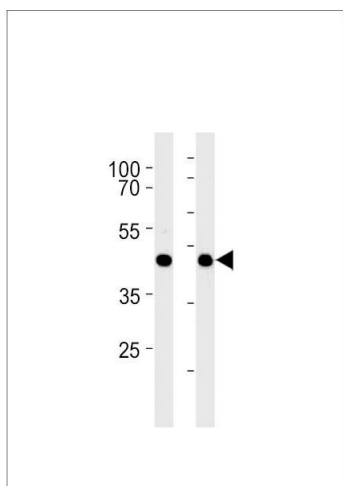
Storage: 4 °C, -20 °C

Expiry Date: 6 months

Publications

Product cited in: Si, Ali, Latip, Fauzi, Budin, Zainalabidin: "Roselle is cardioprotective in diet-induced obesity rat model with myocardial infarction." in: **Life sciences**, Vol. 191, pp. 157-165, (2017) ([PubMed](#)).

Yida, Imam, Ismail, Ooi, Sarega, Azmi, Ismail, Chan, Hou, Yusuf: "Edible Bird's Nest Prevents High Fat Diet-Induced Insulin Resistance in Rats." in: **Journal of diabetes research**, Vol. 2015, pp. 760535, (2016) ([PubMed](#)).



Western Blotting

Image 1. Mouse Gpr68 Antibody (Center) (ABIN1881516 and ABIN2843615) western blot analysis in mouse liver and heart tissue lysates (35 µg/lane). This demonstrates the Mouse Gpr68 antibody detected the Mouse Gpr68 protein (arrow).