

Datasheet for ABIN1881517  
**anti-SH2D5 antibody (AA 200-230)**



[Go to Product page](#)

1 Image

## Overview

Quantity:	400 µL
Target:	SH2D5
Binding Specificity:	AA 200-230
Reactivity:	Mouse
Host:	Rabbit
Clonality:	Polyclonal
Conjugate:	This SH2D5 antibody is un-conjugated
Application:	Western Blotting (WB)

## Product Details

Immunogen:	This Mouse Sh2d5 antibody is generated from rabbits immunized with a KLH conjugated synthetic peptide between 200-230 amino acids from the Central region of mouse Sh2d5.
Isotype:	Ig Fraction
Purification:	This antibody is purified through a protein A column, followed by peptide affinity purification.

## Target Details

Target:	SH2D5
Alternative Name:	Sh2d5 ( <a href="#">SH2D5 Products</a> )
Background:	The function of this protein is unknown.
Molecular Weight:	47380

## Target Details

UniProt: [Q8JZW5](#)

## Application Details

Application Notes: WB: 1:1000

Restrictions: For Research Use only

## Handling

Format: Liquid

Buffer: Purified polyclonal antibody supplied in PBS with 0.09 % (W/V) sodium azide.

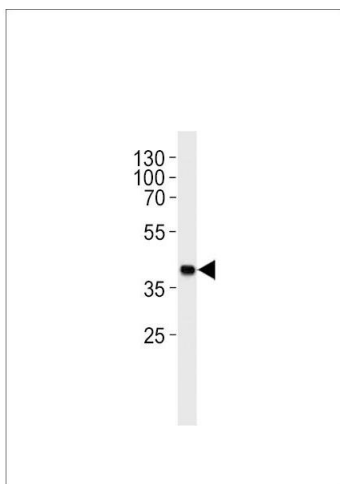
Preservative: Sodium azide

Precaution of Use: This product contains Sodium azide: a POISONOUS AND HAZARDOUS SUBSTANCE which should be handled by trained staff only.

Storage: 4 °C,-20 °C

Expiry Date: 6 months

## Images



### Western Blotting

**Image 1.** Mouse Sh2d5 Antibody (Center) (ABIN1881517 and ABIN2843619) western blot analysis in mouse heart tissue lysates (35 µg/lane). This demonstrates the mouse Sh2d5 antibody detected the mouse Sh2d5 protein (arrow).