

Datasheet for ABIN1881528
anti-MAST1 antibody (C-Term)



[Go to Product page](#)

1 Image

Overview

Quantity:	400 µL
Target:	MAST1
Binding Specificity:	AA 1438-1464, C-Term
Reactivity:	Mouse
Host:	Rabbit
Clonality:	Polyclonal
Conjugate:	This MAST1 antibody is un-conjugated
Application:	Western Blotting (WB)

Product Details

Immunogen:	This Mouse Mast1 antibody is generated from rabbits immunized with a KLH conjugated synthetic peptide between 1438-1464 amino acids from the C-terminal region of mouse Mast1.
Clone:	RB42067
Isotype:	Ig Fraction
Predicted Reactivity:	Rat
Purification:	This antibody is purified through a protein A column, followed by peptide affinity purification.

Target Details

Target:	MAST1
Alternative Name:	Mast1 (MAST1 Products)

Target Details

Background:	Appears to link the dystrophin/utrophin network with microtubule filaments via the syntrophins. Phosphorylation of DMD or UTRN may modulate their affinities for associated proteins.
Molecular Weight:	170997
NCBI Accession:	NP_064329
UniProt:	Q9R1L5

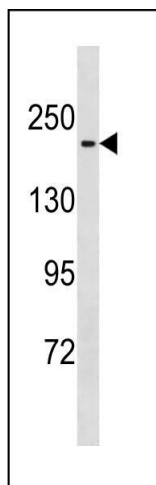
Application Details

Application Notes:	WB: 1:1000
Restrictions:	For Research Use only

Handling

Format:	Liquid
Buffer:	Purified polyclonal antibody supplied in PBS with 0.09 % (W/V) sodium azide.
Preservative:	Sodium azide
Precaution of Use:	This product contains Sodium azide: a POISONOUS AND HAZARDOUS SUBSTANCE which should be handled by trained staff only.
Storage:	4 °C,-20 °C
Expiry Date:	6 months

Images



Western Blotting

Image 1. Mouse Mast1 Antibody (C-term) (ABIN1881528 and ABIN2843235) western blot analysis in mouse spleen tissue lysates (35 µg/lane). This demonstrates the Mouse Mast1 antibody detected the Mouse Mast1 protein (arrow).