



[Go to Product page](#)

Datasheet for ABIN1881538

anti-MEGF11 antibody (N-Term)

1 Image

4 Publications

Overview

Quantity:	400 µL
Target:	MEGF11
Binding Specificity:	AA 50-79, N-Term
Reactivity:	Mouse
Host:	Rabbit
Clonality:	Polyclonal
Application:	Western Blotting (WB)

Product Details

Immunogen:	This MEG11 antibody is generated from rabbits immunized with a KLH conjugated synthetic peptide between 50-79 amino acids from the N-terminal region of human MEG11.
Clone:	RB42701
Isotype:	Ig Fraction
Purification:	This antibody is purified through a protein A column, followed by peptide affinity purification.

Target Details

Target:	MEGF11
Abstract:	MEGF11 Products
Background:	The function of this protein is unknown.
Molecular Weight:	110844

Target Details

NCBI Accession: [NP_115821](#)

UniProt: [A6BM72](#)

Application Details

Application Notes: WB: 1:1000

Restrictions: For Research Use only

Handling

Format: Liquid

Buffer: Purified polyclonal antibody supplied in PBS with 0.09 % (W/V) sodium azide.

Preservative: Sodium azide

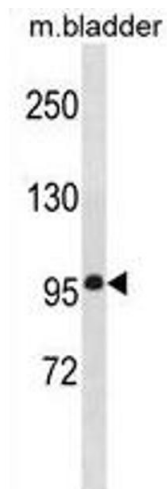
Precaution of Use: This product contains Sodium azide: a POISONOUS AND HAZARDOUS SUBSTANCE which should be handled by trained staff only.

Storage: 4 °C, -20 °C

Expiry Date: 6 months

Publications

Product cited in: Mei, Li, Chu, Yiu, Lo: "The inhibitory effects of silver diamine fluoride at different concentrations on matrix metalloproteinases." in: **Dental materials : official publication of the Academy of Dental Materials**, Vol. 28, Issue 8, pp. 903-8, (2012) ([PubMed](#)).



Western Blotting

Image 1. MEG11 Antibody (N-term) (ABIN1881538 and ABIN2839082) western blot analysis in mouse bladder tissue lysates (35 µg/lane). This demonstrates the MEG11 antibody detected the MEG11 protein (arrow).