



[Go to Product page](#)

Datasheet for ABIN1881541  
**anti-MFSD4 antibody (AA 262-290)**

1 Image

Overview

Quantity:	400 µL
Target:	MFSD4
Binding Specificity:	AA 262-290
Reactivity:	Human
Host:	Rabbit
Clonality:	Polyclonal
Conjugate:	This MFSD4 antibody is un-conjugated
Application:	Western Blotting (WB)

Product Details

Immunogen:	This MFSD4 antibody is generated from rabbits immunized with a KLH conjugated synthetic peptide between 262-290 amino acids from the Central region of human MFSD4.
Clone:	RB28027
Isotype:	Ig Fraction
Purification:	This antibody is purified through a protein A column, followed by peptide affinity purification.

Target Details

Target:	MFSD4
Alternative Name:	MFSD4 ( <a href="#">MFSD4 Products</a> )
Molecular Weight:	56265

## Target Details

NCBI Accession: [NP\\_857595](#)

UniProt: [Q8N468](#)

## Application Details

Application Notes: WB: 1:1000

Restrictions: For Research Use only

## Handling

Format: Liquid

Buffer: Purified polyclonal antibody supplied in PBS with 0.09 % (W/V) sodium azide.

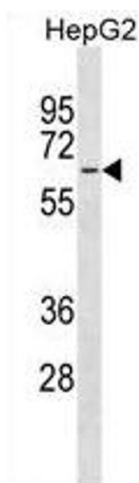
Preservative: Sodium azide

Precaution of Use: This product contains Sodium azide: a POISONOUS AND HAZARDOUS SUBSTANCE which should be handled by trained staff only.

Storage: 4 °C, -20 °C

Expiry Date: 6 months

## Images



### Western Blotting

**Image 1.** MFSD4 Antibody (Center) (ABIN1881541 and ABIN2838615) western blot analysis in HepG2 cell line lysates (35 µg/lane). This demonstrates the MFSD4 antibody detected the MFSD4 protein (arrow).