



[Go to Product page](#)

Datasheet for ABIN1881544

anti-MMACHC antibody (C-Term)

1 Image

5 Publications

Overview

Quantity:	400 µL
Target:	MMACHC
Binding Specificity:	AA 239-267, C-Term
Reactivity:	Human
Host:	Rabbit
Clonality:	Polyclonal
Conjugate:	This MMACHC antibody is un-conjugated
Application:	Western Blotting (WB)

Product Details

Immunogen:	This MMACHC antibody is generated from rabbits immunized with a KLH conjugated synthetic peptide between 239-267 amino acids from the C-terminal region of human MMACHC.
Clone:	RB42667
Isotype:	Ig Fraction
Purification:	This antibody is purified through a protein A column, followed by peptide affinity purification.

Target Details

Target:	MMACHC
Alternative Name:	MMACHC (MMACHC Products)
Background:	The exact function of the protein encoded by this gene is not known, however, its C-terminal

Target Details

region shows similarity to TonB, a bacterial protein involved in energy transduction for cobalamin (vitamin B12) uptake. Hence, it is postulated that this protein may have a role in the binding and intracellular trafficking of cobalamin. Mutations in this gene are associated with methylmalonic aciduria and homocystinuria type cblC.

Molecular Weight: 31728

NCBI Accession: [NP_056321](#)

UniProt: [Q9Y4U1](#)

Application Details

Application Notes: WB: 1:1000

Restrictions: For Research Use only

Handling

Format: Liquid

Buffer: Purified polyclonal antibody supplied in PBS with 0.09 % (W/V) sodium azide.

Preservative: Sodium azide

Precaution of Use: This product contains Sodium azide: a POISONOUS AND HAZARDOUS SUBSTANCE which should be handled by trained staff only.

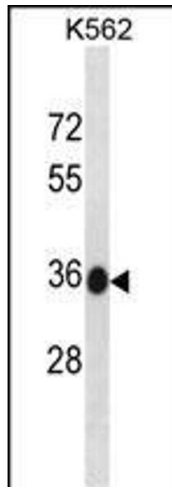
Storage: 4 °C,-20 °C

Expiry Date: 6 months

Publications

Product cited in: Akpa, Oyejola: "Modeling the transmission dynamics of HIV/AIDS epidemics: an introduction and a review." in: **Journal of infection in developing countries**, Vol. 4, Issue 10, pp. 597-608, (2010) ([PubMed](#)).

Kladney, Cardiff, Kwiatkowski, Chiang, Weber, Arbeit, Lu: "Tuberous sclerosis complex 1: an epithelial tumor suppressor essential to prevent spontaneous prostate cancer in aged mice." in: **Cancer research**, Vol. 70, Issue 21, pp. 8937-47, (2010) ([PubMed](#)).



Western Blotting

Image 1. ACHC Antibody (C-term) (ABIN1881544 and ABIN2838981) western blot analysis in K562 cell line lysates (35 µg/lane). This demonstrates the ACHC antibody detected the ACHC protein (arrow).