

Datasheet for ABIN1881545
anti-MMEL1 antibody (N-Term)[Go to Product page](#)

1 Image

4 Publications

Overview

Quantity:	400 µL
Target:	MMEL1
Binding Specificity:	AA 50-78, N-Term
Reactivity:	Human
Host:	Rabbit
Clonality:	Polyclonal
Conjugate:	This MMEL1 antibody is un-conjugated
Application:	Western Blotting (WB)

Product Details

Immunogen:	This MMEL1 antibody is generated from rabbits immunized with a KLH conjugated synthetic peptide between 50-78 amino acids from the N-terminal region of human MMEL1.
Clone:	RB40353
Isotype:	Ig Fraction
Purification:	This antibody is purified through a protein A column, followed by peptide affinity purification.

Target Details

Target:	MMEL1
Alternative Name:	MMEL1 (MMEL1 Products)
Background:	The protein encoded by this gene is a member of the neutral endopeptidase (NEP) or

Target Details

membrane metallo-endopeptidase (MME) family. Family members play important roles in pain perception, arterial pressure regulation, phosphate metabolism and homeostasis. This protein is a type II transmembrane protein and is thought to be expressed as a secreted protein. This gene is expressed mainly in testis with weak expression in the brain, kidney, and heart.

Molecular Weight: 89367

NCBI Accession: [NP_258428](#)

UniProt: [Q495T6](#)

Application Details

Application Notes: WB: 1:1000

Restrictions: For Research Use only

Handling

Format: Liquid

Buffer: Purified polyclonal antibody supplied in PBS with 0.09 % (W/V) sodium azide.

Preservative: Sodium azide

Precaution of Use: This product contains Sodium azide: a POISONOUS AND HAZARDOUS SUBSTANCE which should be handled by trained staff only.

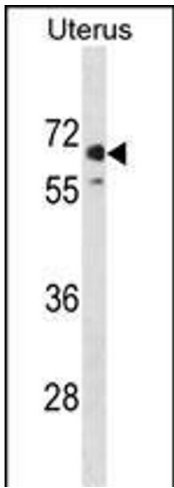
Storage: 4 °C, -20 °C

Expiry Date: 6 months

Publications

Product cited in: Akpa, Oyejola: "Modeling the transmission dynamics of HIV/AIDS epidemics: an introduction and a review." in: **Journal of infection in developing countries**, Vol. 4, Issue 10, pp. 597-608, (2010) ([PubMed](#)).

Kladney, Cardiff, Kwiatkowski, Chiang, Weber, Arbeit, Lu: "Tuberous sclerosis complex 1: an epithelial tumor suppressor essential to prevent spontaneous prostate cancer in aged mice." in: **Cancer research**, Vol. 70, Issue 21, pp. 8937-47, (2010) ([PubMed](#)).



Western Blotting

Image 1. EL1 Antibody (N-term) (ABIN1881545 and ABIN2839006) western blot analysis in human Uterus tissue lysates (35 µg/lane). This demonstrates the EL1 antibody detected the EL1 protein (arrow).