



[Go to Product page](#)

Datasheet for ABIN1881547

anti-MMP26 antibody (AA 96-125)

1 Image

2 Publications

Overview

Quantity:	400 µL
Target:	MMP26
Binding Specificity:	AA 96-125
Reactivity:	Human
Host:	Rabbit
Clonality:	Polyclonal
Conjugate:	This MMP26 antibody is un-conjugated
Application:	Western Blotting (WB)

Product Details

Immunogen:	This MMP26 antibody is generated from rabbits immunized with a KLH conjugated synthetic peptide between 96-125 amino acids from the Central region of human MMP26.
Clone:	RB41665
Isotype:	Ig Fraction
Purification:	This antibody is purified through a protein A column, followed by peptide affinity purification.

Target Details

Target:	MMP26
Alternative Name:	MMP26 (MMP26 Products)
Background:	Proteins of the matrix metalloproteinase (MMP) family are involved in the breakdown of

Target Details

extracellular matrix in normal physiological processes, such as embryonic development, reproduction, and tissue remodeling, as well as in disease processes, such as arthritis and metastasis. Most MMP's are secreted as inactive proproteins which are activated when cleaved by extracellular proteinases. The encoded protein degrades type IV collagen, fibronectin, fibrinogen, casein, vitronectin, alpha 1-antitrypsin, alpha 2-macroglobulin, and insulin-like growth factor-binding protein 1, and activates MMP9 by cleavage. The protein differs from most MMP family members in that it lacks a conserved C-terminal protein domain.

Molecular Weight: 29708

NCBI Accession: [NP_068573](#)

UniProt: [Q9NRE1](#)

Application Details

Application Notes: WB: 1:1000

Restrictions: For Research Use only

Handling

Format: Liquid

Buffer: Purified polyclonal antibody supplied in PBS with 0.09 % (W/V) sodium azide.

Preservative: Sodium azide

Precaution of Use: This product contains Sodium azide: a POISONOUS AND HAZARDOUS SUBSTANCE which should be handled by trained staff only.

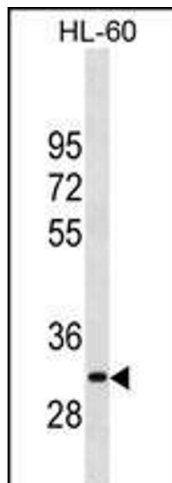
Storage: 4 °C,-20 °C

Expiry Date: 6 months

Publications

Product cited in: Akpa, Oyejola: "Modeling the transmission dynamics of HIV/AIDS epidemics: an introduction and a review." in: **Journal of infection in developing countries**, Vol. 4, Issue 10, pp. 597-608, (2010) ([PubMed](#)).

Kladney, Cardiff, Kwiatkowski, Chiang, Weber, Arbeit, Lu: "Tuberous sclerosis complex 1: an epithelial tumor suppressor essential to prevent spontaneous prostate cancer in aged mice." in:



Western Blotting

Image 1. P26 Antibody (Center) (ABIN1881547 and ABIN2838850) western blot analysis in HL-60 cell line lysates (35 µg/lane). This demonstrates the P26 antibody detected the P26 protein (arrow).