



[Go to Product page](#)

Datasheet for ABIN1881550

## anti-MPDU1 antibody (C-Term)

1 Image

4 Publications

### Overview

Quantity:	400 µL
Target:	MPDU1
Binding Specificity:	AA 219-247, C-Term
Reactivity:	Human
Host:	Rabbit
Clonality:	Polyclonal
Application:	Western Blotting (WB)

### Product Details

Immunogen:	This MPDU1 antibody is generated from rabbits immunized with a KLH conjugated synthetic peptide between 219-247 amino acids from the C-terminal region of human MPDU1.
Clone:	RB42402
Isotype:	Ig Fraction
Purification:	This antibody is purified through a protein A column, followed by peptide affinity purification.

### Target Details

Target:	MPDU1
Alternative Name:	MPDU1 ( <a href="#">MPDU1 Products</a> )
Background:	This gene encodes an endoplasmic reticulum membrane protein that is required for utilization of the mannose donor mannose-P-dolichol in the synthesis of lipid-linked oligosaccharides and glycosylphosphatidylinositols. Mutations in this gene result in congenital disorder of

## Target Details

---

glycosylation type If. Alternative splicing results in multiple transcript variants.

Molecular Weight: 26638

NCBI Accession: [NP\\_004861](#)

UniProt: [O75352](#)

## Application Details

---

Application Notes: WB: 1:1000

Restrictions: For Research Use only

## Handling

---

Format: Liquid

Buffer: Purified polyclonal antibody supplied in PBS with 0.09 % (W/V) sodium azide.

Preservative: Sodium azide

Precaution of Use: This product contains Sodium azide: a POISONOUS AND HAZARDOUS SUBSTANCE which should be handled by trained staff only.

Storage: 4 °C, -20 °C

Expiry Date: 6 months

## Publications

---

Product cited in: Guey, García-Closas, Murta-Nascimento, Lloreta, Palencia, Kogevinas, Rothman, Vellalta, Calle, Marenne, Tardón, Carrato, García-Closas, Serra, Silverman, Chanock, Real, Malats: "Genetic susceptibility to distinct bladder cancer subphenotypes." in: **European urology**, Vol. 57, Issue 2, pp. 283-92, (2010) ([PubMed](#)).

Hosgood, Menashe, He, Chanock, Lan: "PTEN identified as important risk factor of chronic obstructive pulmonary disease." in: **Respiratory medicine**, Vol. 103, Issue 12, pp. 1866-70, (2009) ([PubMed](#)).

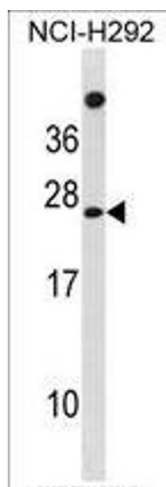
Shen, Vermeulen, Rajaraman, Menashe, He, Chapman, Yeager, Thomas, Burdett, Hutchinson, Yuenger, Chanock, Lan: "Polymorphisms in innate immunity genes and lung cancer risk in Xuanwei, China." in: **Environmental and molecular mutagenesis**, Vol. 50, Issue 4, pp. 285-90, (

2009) ([PubMed](#)).

Hosgood, Menashe, Shen, Yeager, Yuenger, Rajaraman, He, Chatterjee, Caporaso, Zhu, Chanock, Zheng, Lan: "Pathway-based evaluation of 380 candidate genes and lung cancer susceptibility suggests the importance of the cell cycle pathway." in: **Carcinogenesis**, Vol. 29, Issue 10, pp. 1938-43, (2008) ([PubMed](#)).

## Images

---



### Western Blotting

**Image 1.** DU1 Antibody (C-term) (ABIN1881550 and ABIN2839061) western blot analysis in NCI- cell line lysates (35 µg/lane). This demonstrates the DU1 antibody detected the DU1 protein (arrow).