



Datasheet for ABIN1881554
anti-MS4A13 antibody (N-Term)



[Go to Product page](#)

1 Image

Overview

Quantity:	400 µL
Target:	MS4A13
Binding Specificity:	AA 7-36, N-Term
Reactivity:	Human, Mouse
Host:	Rabbit
Clonality:	Polyclonal
Conjugate:	This MS4A13 antibody is un-conjugated
Application:	Western Blotting (WB)

Product Details

Immunogen:	This MS4A13 antibody is generated from rabbits immunized with a KLH conjugated synthetic peptide between 7-36 amino acids from the N-terminal region of human MS4A13.
Clone:	RB29884
Isotype:	Ig Fraction
Purification:	This antibody is purified through a protein A column, followed by peptide affinity purification.

Target Details

Target:	MS4A13
Alternative Name:	MS4A13 (MS4A13 Products)
Background:	MS4A13 may be involved in signal transduction as a component of a multimeric receptor

Target Details

complex (By similarity).

Molecular Weight: 17307

NCBI Accession: [NP_001012417](#), [NP_001094379](#), [NP_001265249](#)

UniProt: [Q5J8X5](#)

Application Details

Application Notes: WB: 1:1000

Restrictions: For Research Use only

Handling

Format: Liquid

Buffer: Purified polyclonal antibody supplied in PBS with 0.09 % (W/V) sodium azide.

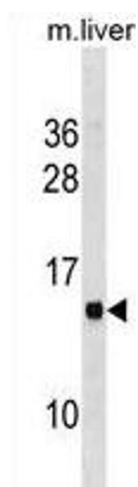
Preservative: Sodium azide

Precaution of Use: This product contains Sodium azide: a POISONOUS AND HAZARDOUS SUBSTANCE which should be handled by trained staff only.

Storage: 4 °C, -20 °C

Expiry Date: 6 months

Images



Western Blotting

Image 1. MS4A13 Antibody (N-term) (ABIN1881554 and ABIN2838650) western blot analysis in mouse liver tissue lysates (35 µg/lane). This demonstrates the MS4A13 antibody detected the MS4A13 protein (arrow).