

Datasheet for ABIN1881555
anti-Msx2/Hox8 antibody (C-Term)[Go to Product page](#)

2 Images

1 Publication

Overview

Quantity:	400 µL
Target:	Msx2/Hox8 (Msx2)
Binding Specificity:	AA 191-222, C-Term
Reactivity:	Human
Host:	Rabbit
Clonality:	Polyclonal
Conjugate:	This Msx2/Hox8 antibody is un-conjugated
Application:	Western Blotting (WB), Immunohistochemistry (Paraffin-embedded Sections) (IHC (p))

Product Details

Immunogen:	This Msx2 antibody is generated from rabbits immunized with a KLH conjugated synthetic peptide between 191-222 amino acids from the C-terminal region of human Msx2.
Clone:	RB10531
Isotype:	Ig Fraction
Purification:	This antibody is purified through a protein A column, followed by peptide affinity purification.

Target Details

Target:	Msx2/Hox8 (Msx2)
Alternative Name:	Msx2 (Msx2 Products)
Background:	This gene encodes a member of the muscle segment homeobox gene family. The encoded

Target Details

protein is a transcriptional repressor whose normal activity may establish a balance between survival and apoptosis of neural crest-derived cells required for proper craniofacial morphogenesis. The encoded protein may also have a role in promoting cell growth under certain conditions and may be an important target for the RAS signaling pathways. Mutations in this gene are associated with parietal foramina 1 and craniosynostosis type 2.

Molecular Weight: 28897

NCBI Accession: [NP_002440](#)

UniProt: [P35548](#)

Application Details

Application Notes: WB: 1:1000. IHC-P: 1:10~50

Restrictions: For Research Use only

Handling

Format: Liquid

Buffer: Purified polyclonal antibody supplied in PBS with 0.09 % (W/V) sodium azide.

Preservative: Sodium azide

Precaution of Use: This product contains Sodium azide: a POISONOUS AND HAZARDOUS SUBSTANCE which should be handled by trained staff only.

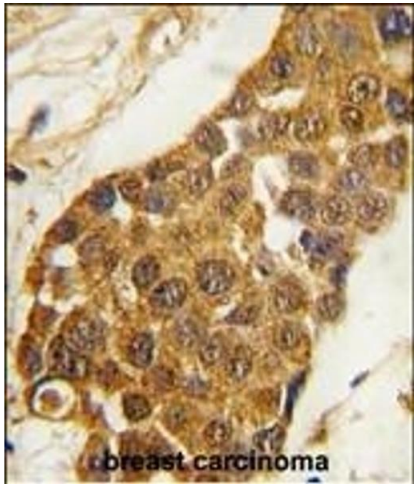
Storage: 4 °C, -20 °C

Expiry Date: 6 months

Publications

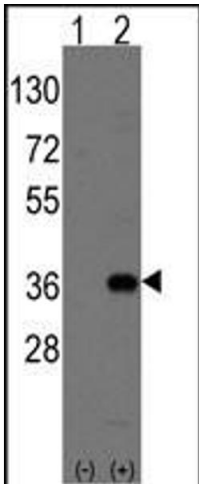
Product cited in: Akpa, Oyejola: "Modeling the transmission dynamics of HIV/AIDS epidemics: an introduction and a review." in: **Journal of infection in developing countries**, Vol. 4, Issue 10, pp. 597-608, (2010) ([PubMed](#)).

Kladney, Cardiff, Kwiatkowski, Chiang, Weber, Arbeit, Lu: "Tuberous sclerosis complex 1: an epithelial tumor suppressor essential to prevent spontaneous prostate cancer in aged mice." in: **Cancer research**, Vol. 70, Issue 21, pp. 8937-47, (2010) ([PubMed](#)).



Immunohistochemistry (Paraffin-embedded Sections)

Image 1. Formalin-fixed and paraffin-embedded human breast carcinoma tissue reacted with Msx2 Antibody (C-term) (ABIN1881555 and ABIN2839326) , which was peroxidase-conjugated to the secondary antibody, followed by DAB staining. This data demonstrates the use of this antibody for immunohistochemistry, clinical relevance has not been evaluated.



Western Blotting

Image 2. Western blot analysis of Msx2 (arrow) using rabbit polyclonal Msx2 Antibody (Human C-term) (ABIN1881555 and ABIN2839326). 293 cell lysates (2 µg/lane) either nontransfected (Lane 1) or transiently transfected with the Msx2 gene (Lane 2) (Origene Technologies).