

Datasheet for ABIN1881557
anti-MTAP antibody (N-Term)[Go to Product page](#)

1 Image

3 Publications

Overview

Quantity:	400 µL
Target:	MTAP
Binding Specificity:	AA 8-37, N-Term
Reactivity:	Human
Host:	Rabbit
Clonality:	Polyclonal
Conjugate:	This MTAP antibody is un-conjugated
Application:	Western Blotting (WB)

Product Details

Immunogen:	This MTAP antibody is generated from rabbits immunized with a KLH conjugated synthetic peptide between 8-37 amino acids from the N-terminal region of human MTAP.
Clone:	RB42759
Isotype:	Ig Fraction
Predicted Reactivity:	B, M
Purification:	This antibody is purified through a protein A column, followed by peptide affinity purification.

Target Details

Target:	MTAP
Alternative Name:	MTAP (MTAP Products)

Target Details

Background:	This gene encodes an enzyme that plays a major role in polyamine metabolism and is important for the salvage of both adenine and methionine. The encoded enzyme is deficient in many cancers because this gene and the tumor suppressor p16 gene are co-deleted. Multiple alternatively spliced transcript variants have been described for this gene, but their full-length natures remain unknown.
Molecular Weight:	31236
NCBI Accession:	NP_002442
UniProt:	Q13126
Pathways:	Ribonucleoside Biosynthetic Process , Methionine Biosynthetic Process

Application Details

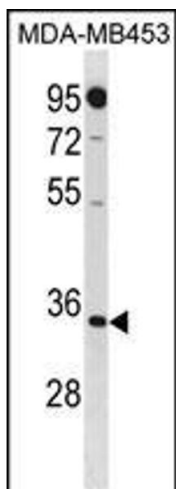
Application Notes:	WB: 1:1000
Restrictions:	For Research Use only

Handling

Format:	Liquid
Buffer:	Purified polyclonal antibody supplied in PBS with 0.09 % (W/V) sodium azide.
Preservative:	Sodium azide
Precaution of Use:	This product contains Sodium azide: a POISONOUS AND HAZARDOUS SUBSTANCE which should be handled by trained staff only.
Storage:	4 °C,-20 °C
Expiry Date:	6 months

Publications

Product cited in:	<p>Akpa, Oyejola: "Modeling the transmission dynamics of HIV/AIDS epidemics: an introduction and a review." in: Journal of infection in developing countries, Vol. 4, Issue 10, pp. 597-608, (2010) (PubMed).</p> <p>Kladney, Cardiff, Kwiatkowski, Chiang, Weber, Arbeit, Lu: "Tuberous sclerosis complex 1: an epithelial tumor suppressor essential to prevent spontaneous prostate cancer in aged mice." in: Cancer research, Vol. 70, Issue 21, pp. 8937-47, (2010) (PubMed).</p>
-------------------	--



Western Blotting

Image 1. MT Antibody (N-term) 20271a western blot analysis in MDA-M cell line lysates (35 µg/lane). This demonstrates the MT antibody detected the MT protein (arrow).