

Datasheet for ABIN1881561
anti-MYL12B antibody (N-Term)[Go to Product page](#)

1 Image

Overview

Quantity:	400 µL
Target:	MYL12B
Binding Specificity:	AA 1-30, N-Term
Reactivity:	Human
Host:	Rabbit
Clonality:	Polyclonal
Conjugate:	This MYL12B antibody is un-conjugated
Application:	Western Blotting (WB)

Product Details

Immunogen:	This MYL12B antibody is generated from rabbits immunized with a KLH conjugated synthetic peptide between 1-30 amino acids from the N-terminal region of human MYL12B.
Clone:	RB41578
Isotype:	Ig Fraction
Predicted Reactivity:	M, Rat
Purification:	This antibody is purified through a protein A column, followed by peptide affinity purification.

Target Details

Target:	MYL12B
Alternative Name:	MYL12B (MYL12B Products)

Target Details

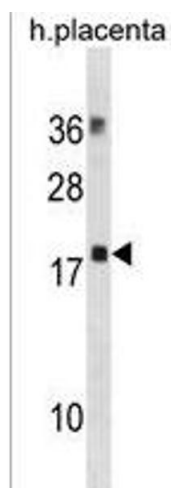
Background:	The activity of nonmuscle myosin II (see MYH9, MIM 160775) is regulated by phosphorylation of a regulatory light chain, such as MRLC2. This phosphorylation results in higher MgATPase activity and the assembly of myosin II filaments (Iwasaki et al., 2001 [PubMed 11942626]).
Molecular Weight:	19779
NCBI Accession:	NP_001138416 , NP_001138417 , NP_291024
UniProt:	O14950
Pathways:	Feeding Behaviour

Application Details

Application Notes:	WB: 1:1000
Restrictions:	For Research Use only

Handling

Format:	Liquid
Buffer:	Purified polyclonal antibody supplied in PBS with 0.09 % (W/V) sodium azide.
Preservative:	Sodium azide
Precaution of Use:	This product contains Sodium azide: a POISONOUS AND HAZARDOUS SUBSTANCE which should be handled by trained staff only.
Storage:	4 °C, -20 °C
Expiry Date:	6 months



Western Blotting

Image 1. MYL12B Antibody (N-term) (ABIN1881561 and ABIN2838709) western blot analysis in human placenta tissue lysates (35 µg/lane). This demonstrates the MYL12B antibody detected the MYL12B protein (arrow).