

Datasheet for ABIN1881578
anti-NFE2L3 antibody (C-Term)



[Go to Product page](#)

2 Images

3 Publications

Overview

Quantity:	400 µL
Target:	NFE2L3
Binding Specificity:	AA 666-694, C-Term
Reactivity:	Human
Host:	Rabbit
Clonality:	Polyclonal
Conjugate:	This NFE2L3 antibody is un-conjugated
Application:	Western Blotting (WB)

Product Details

Immunogen:	This NFE2L3 antibody is generated from rabbits immunized with a KLH conjugated synthetic peptide between 666-694 amino acids from the C-terminal region of human NFE2L3.
Clone:	RB41576
Isotype:	Ig Fraction
Purification:	This antibody is purified through a protein A column, followed by peptide affinity purification.

Target Details

Target:	NFE2L3
Alternative Name:	NFE2L3 (NFE2L3 Products)
Background:	This gene encodes a member of the cap 'n' collar basic-region leucine zipper family of

Target Details

transcription factors. The encoded protein heterodimerizes with small musculoaponeurotic fibrosarcoma factors to bind antioxidant response elements in target genes. This protein is a membrane bound glycoprotein that is targeted to the endoplasmic reticulum and the nuclear envelope. Pseudogenes of this gene are found on chromosomes 16, 17, and 18.

Molecular Weight: 76154

NCBI Accession: [NP_004280](#)

UniProt: [Q9Y4A8](#)

Application Details

Application Notes: WB: 1:1000. WB: 1:1000

Restrictions: For Research Use only

Handling

Format: Liquid

Buffer: Purified polyclonal antibody supplied in PBS with 0.09 % (W/V) sodium azide.

Preservative: Sodium azide

Precaution of Use: This product contains Sodium azide: a POISONOUS AND HAZARDOUS SUBSTANCE which should be handled by trained staff only.

Storage: 4 °C,-20 °C

Expiry Date: 6 months

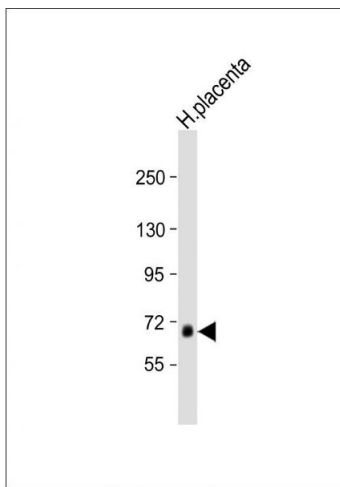
Publications

Product cited in: Bailey, Xie, Do, Montpetit, Diaz, Mohan, Keavney, Yusuf, Gerstein, Engert, Anand: "Variation at the NFATC2 locus increases the risk of thiazolidinedione-induced edema in the Diabetes REduction Assessment with ramipril and rosiglitazone Medication (DREAM) study." in: **Diabetes Care**, Vol. 33, Issue 10, pp. 2250-3, (2010) ([PubMed](#)).

Zhang, Kobayashi, Yamamoto, Hayes: "The Nrf3 transcription factor is a membrane-bound glycoprotein targeted to the endoplasmic reticulum through its N-terminal homology box 1 sequence." in: **The Journal of biological chemistry**, Vol. 284, Issue 5, pp. 3195-210, (2009) ([PubMed](#)).

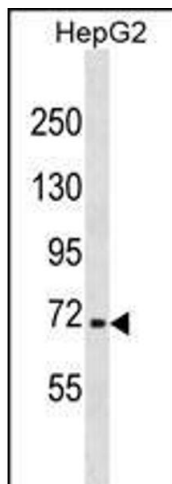
Talmud, Drenos, Shah, Shah, Palmen, Verzilli, Gaunt, Pallas, Lovering, Li, Casas, Sofat, Kumari, Rodriguez, Johnson, Newhouse, Dominiczak, Samani, Caulfield, Sever, Stanton, Shields, Padmanabhan et al.: "Gene-centric association signals for lipids and apolipoproteins identified via the HumanCVD BeadChip. ..." in: **American journal of human genetics**, Vol. 85, Issue 5, pp. 628-42, (2009) ([PubMed](#)).

Images



Western Blotting

Image 1. Anti-NFE2L3 Antibody (C-term) at 1:1000 dilution + human placenta lysate Lysates/proteins at 20 µg per lane. Secondary Goat Anti-Rabbit IgG, (H+L), Peroxidase conjugated at 1/10000 dilution. Predicted band size : 76 kDa Blocking/Dilution buffer: 5 % NFDm/TBST.



Western Blotting

Image 2. NFE2L3 Antibody (C-term) (ABIN1881578 and ABIN2838834) western blot analysis in HepG2 cell line lysates (35 µg/lane). This demonstrates the NFE2L3 antibody detected the NFE2L3 protein (arrow).