

Datasheet for ABIN1881598
anti-OR1L3 antibody (C-Term)



[Go to Product page](#)

1 Image

1 Publication

Overview

Quantity:	400 µL
Target:	OR1L3
Binding Specificity:	AA 290-320, C-Term
Reactivity:	Human
Host:	Rabbit
Clonality:	Polyclonal
Conjugate:	This OR1L3 antibody is un-conjugated
Application:	Western Blotting (WB)

Product Details

Immunogen:	This OR1L3 antibody is generated from rabbits immunized with a KLH conjugated synthetic peptide between 290-320 amino acids from the C-terminal region of human OR1L3.
Isotype:	Ig Fraction
Purification:	This antibody is purified through a protein A column, followed by peptide affinity purification.

Target Details

Target:	OR1L3
Alternative Name:	OR1L3 (OR1L3 Products)
Background:	Odorant receptor (Potential).
Molecular Weight:	36633

Target Details

NCBI Accession: [NP_001005234](#)

UniProt: [Q8NH93](#)

Application Details

Application Notes: WB: 1:1000

Restrictions: For Research Use only

Handling

Format: Liquid

Buffer: Purified polyclonal antibody supplied in PBS with 0.09 % (W/V) sodium azide.

Preservative: Sodium azide

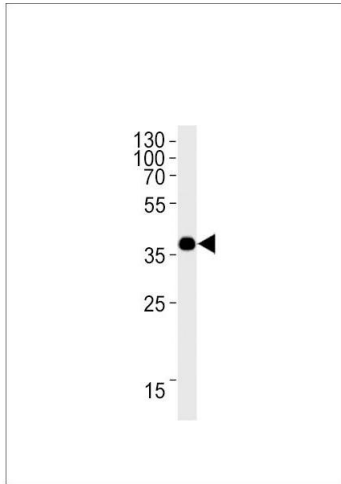
Precaution of Use: This product contains Sodium azide: a POISONOUS AND HAZARDOUS SUBSTANCE which should be handled by trained staff only.

Storage: 4 °C, -20 °C

Expiry Date: 6 months

Publications

Product cited in: Malnic, Godfrey, Buck: "The human olfactory receptor gene family." in: **Proceedings of the National Academy of Sciences of the United States of America**, Vol. 101, Issue 8, pp. 2584-9, (2004) ([PubMed](#)).



Western Blotting

Image 1. OR1L3 Antibody (C-term) (ABIN1881598 and ABIN2838441) western blot analysis in HepG2 cell line lysates (35 µg/lane). This demonstrates the OR1L3 antibody detected the OR1L3 protein (arrow).