

Datasheet for ABIN1881632
anti-PARP3 antibody (N-Term)[Go to Product page](#)

1 Image

Overview

Quantity:	400 µL
Target:	PARP3
Binding Specificity:	AA 99-126, N-Term
Reactivity:	Human
Host:	Rabbit
Clonality:	Polyclonal
Conjugate:	This PARP3 antibody is un-conjugated
Application:	Western Blotting (WB)

Product Details

Immunogen:	This PARP3 antibody is generated from rabbits immunized with a KLH conjugated synthetic peptide between 99-126 amino acids from the N-terminal region of human PARP3.
Clone:	RB42819
Isotype:	Ig Fraction
Purification:	This antibody is purified through a protein A column, followed by peptide affinity purification.

Target Details

Target:	PARP3
Alternative Name:	PARP3 (PARP3 Products)
Background:	Involved in the base excision repair (BER) pathway, by catalyzing the poly(ADP-ribosyl)ation of a

Target Details

limited number of acceptor proteins involved in chromatin architecture and in DNA metabolism. This modification follows DNA damages and appears as an obligatory step in a detection/signaling pathway leading to the reparation of DNA strand breaks. May link the DNA damage surveillance network to the mitotic fidelity checkpoint. Negatively influences the G1/S cell cycle progression without interfering with centrosome duplication. Binds DNA. May be involved in the regulation of PRC2 and PRC3 complex-dependent gene silencing.

Molecular Weight: 60089

NCBI Accession: [NP_001003931](#), [NP_005476](#)

UniProt: [Q9Y6F1](#)

Application Details

Application Notes: WB: 1:1000

Restrictions: For Research Use only

Handling

Format: Liquid

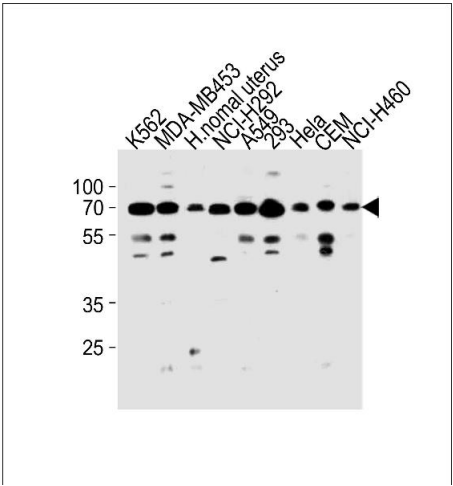
Buffer: Purified polyclonal antibody supplied in PBS with 0.09 % (W/V) sodium azide.

Preservative: Sodium azide

Precaution of Use: This product contains Sodium azide: a POISONOUS AND HAZARDOUS SUBSTANCE which should be handled by trained staff only.

Storage: 4 °C,-20 °C

Expiry Date: 6 months



Western Blotting

Image 1. RP3 Antibody (N-term) (ABIN1881632 and ABIN2843271) western blot analysis in K562,MDA-M,NCI-,A549,293,HeLa,CEM,NCI- cell line and human normal uterus tissue lysates (35 µg/lane).This demonstrates the RP3 antibody detected the RP3 protein (arrow).