



[Go to Product page](#)

Datasheet for ABIN1881636  
**anti-PBX3 antibody (N-Term)**

1 Image

3 Publications

### Overview

Quantity:	400 µL
Target:	PBX3
Binding Specificity:	AA 80-108, N-Term
Reactivity:	Human
Host:	Rabbit
Clonality:	Polyclonal
Conjugate:	This PBX3 antibody is un-conjugated
Application:	Western Blotting (WB)

### Product Details

Immunogen:	This PBX3 antibody is generated from rabbits immunized with a KLH conjugated synthetic peptide between 80-108 amino acids from the N-terminal region of human PBX3.
Clone:	RB41015
Isotype:	Ig Fraction
Predicted Reactivity:	M
Purification:	This antibody is purified through a protein A column, followed by peptide affinity purification.

### Target Details

Target:	PBX3
Alternative Name:	PBX3 ( <a href="#">PBX3 Products</a> )

## Target Details

---

Background:	Transcriptional activator that binds the sequence 5'-ATCAATCAA-3'.
Molecular Weight:	47190
NCBI Accession:	<a href="#">NP_001128250</a> , <a href="#">NP_006186</a>
UniProt:	<a href="#">P40426</a>

## Application Details

---

Application Notes:	WB: 1:1000
Restrictions:	For Research Use only

## Handling

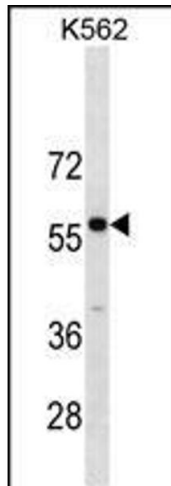
---

Format:	Liquid
Buffer:	Purified polyclonal antibody supplied in PBS with 0.09 % (W/V) sodium azide.
Preservative:	Sodium azide
Precaution of Use:	This product contains Sodium azide: a POISONOUS AND HAZARDOUS SUBSTANCE which should be handled by trained staff only.
Storage:	4 °C, -20 °C
Expiry Date:	6 months

## Publications

---

Product cited in:	<p>Akpa, Oyejola: "Modeling the transmission dynamics of HIV/AIDS epidemics: an introduction and a review." in: <b>Journal of infection in developing countries</b>, Vol. 4, Issue 10, pp. 597-608, (2010) (<a href="#">PubMed</a>).</p> <p>Kladney, Cardiff, Kwiatkowski, Chiang, Weber, Arbeit, Lu: "Tuberous sclerosis complex 1: an epithelial tumor suppressor essential to prevent spontaneous prostate cancer in aged mice." in: <b>Cancer research</b>, Vol. 70, Issue 21, pp. 8937-47, (2010) (<a href="#">PubMed</a>).</p>
-------------------	--



### Western Blotting

**Image 1.** PBX3 Antibody (N-term) (ABIN1881636 and ABIN2838640) western blot analysis in K562 cell line lysates (35 µg/lane). This demonstrates the PBX3 antibody detected the PBX3 protein (arrow).