



[Go to Product page](#)

Datasheet for ABIN1881652
anti-PHOSPHO2 antibody (N-Term)

1 Image

2 Publications

Overview

Quantity:	400 µL
Target:	PHOSPHO2
Binding Specificity:	AA 12-40, N-Term
Reactivity:	Human, Mouse
Host:	Rabbit
Clonality:	Polyclonal
Conjugate:	This PHOSPHO2 antibody is un-conjugated
Application:	Western Blotting (WB)

Product Details

Immunogen:	This PHOSPHO2 antibody is generated from rabbits immunized with a KLH conjugated synthetic peptide between 12-40 amino acids from the N-terminal region of human PHOSPHO2.
Clone:	RB30604
Isotype:	Ig Fraction
Purification:	This antibody is purified through a protein A column, followed by peptide affinity purification.

Target Details

Target:	PHOSPHO2
Alternative Name:	PHOSPHO2 (PHOSPHO2 Products)

Target Details

Background:	Phosphatase that has high activity toward pyridoxal 5'-phosphate (PLP). Also active at much lower level toward pyrophosphate, phosphoethanolamine (PEA), phosphocholine (PCho), phospho-l-tyrosine, fructose-6-phosphate, p-nitrophenyl phosphate, and h-glycerophosphate.
Molecular Weight:	27769
NCBI Accession:	NP_001008489 , NP_001186214 , NP_001186215 , NP_001186216 , NP_001186217
UniProt:	Q8TCD6

Application Details

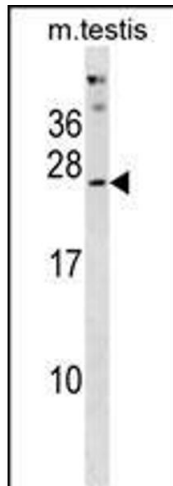
Application Notes:	WB: 1:1000
Restrictions:	For Research Use only

Handling

Format:	Liquid
Buffer:	Purified polyclonal antibody supplied in PBS with 0.09 % (W/V) sodium azide.
Preservative:	Sodium azide
Precaution of Use:	This product contains Sodium azide: a POISONOUS AND HAZARDOUS SUBSTANCE which should be handled by trained staff only.
Storage:	4 °C,-20 °C
Expiry Date:	6 months

Publications

Product cited in:	<p>Choudhary, Kumar, Gnad, Nielsen, Rehman, Walther, Olsen, Mann: "Lysine acetylation targets protein complexes and co-regulates major cellular functions." in: Science (New York, N.Y.), Vol. 325, Issue 5942, pp. 834-40, (2009) (PubMed).</p> <p>Dickeson, Helmkamp, Yarbrough: "Sequence of a human cDNA encoding phosphatidylinositol transfer protein and occurrence of a related sequence in widely divergent eukaryotes." in: Gene, Vol. 142, Issue 2, pp. 301-5, (1994) (PubMed).</p>
-------------------	--



Western Blotting

Image 1. PHOSPHO2 Antibody (N-term) (ABIN1881652 and ABIN2838651) western blot analysis in mouse testis tissue lysates (35 µg/lane). This demonstrates the PHOSPHO2 antibody detected the PHOSPHO2 protein (arrow).