



[Go to Product page](#)

Datasheet for ABIN1881659  
**anti-PLD3 antibody (N-Term)**

1 Image

4 Publications

### Overview

Quantity:	400 µL
Target:	PLD3
Binding Specificity:	AA 9-37, N-Term
Reactivity:	Mouse
Host:	Rabbit
Clonality:	Polyclonal
Conjugate:	This PLD3 antibody is un-conjugated
Application:	Western Blotting (WB)

### Product Details

Immunogen:	This PLD3 antibody is generated from rabbits immunized with a KLH conjugated synthetic peptide between 9-37 amino acids from the N-terminal region of human PLD3.
Clone:	RB40705
Isotype:	Ig Fraction
Predicted Reactivity:	B, Pr, Rat
Purification:	This antibody is purified through a protein A column, followed by peptide affinity purification.

### Target Details

Target:	PLD3
Alternative Name:	PLD3 ( <a href="#">PLD3 Products</a> )

## Target Details

---

Background: The function of this protein is unknown.

Molecular Weight: 54705

NCBI Accession: [NP\\_001026866](#), [NP\\_036400](#)

UniProt: [Q8IV08](#)

Pathways: [SARS-CoV-2 Protein Interactome](#)

## Application Details

---

Application Notes: WB: 1:1000

Restrictions: For Research Use only

## Handling

---

Format: Liquid

Buffer: Purified polyclonal antibody supplied in PBS with 0.09 % (W/V) sodium azide.

Preservative: Sodium azide

Precaution of Use: This product contains Sodium azide: a POISONOUS AND HAZARDOUS SUBSTANCE which should be handled by trained staff only.

Storage: 4 °C,-20 °C

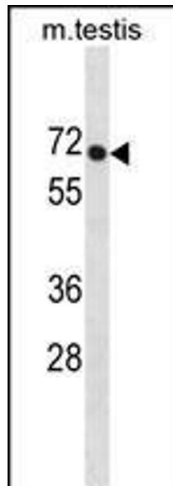
Expiry Date: 6 months

## Publications

---

Product cited in: Akpa, Oyejola: "Modeling the transmission dynamics of HIV/AIDS epidemics: an introduction and a review." in: **Journal of infection in developing countries**, Vol. 4, Issue 10, pp. 597-608, (2010) ([PubMed](#)).

Kladney, Cardiff, Kwiatkowski, Chiang, Weber, Arbeit, Lu: "Tuberous sclerosis complex 1: an epithelial tumor suppressor essential to prevent spontaneous prostate cancer in aged mice." in: **Cancer research**, Vol. 70, Issue 21, pp. 8937-47, (2010) ([PubMed](#)).



### Western Blotting

**Image 1.** PLD3 Antibody (N-term) (ABIN1881659 and ABIN2838780) western blot analysis in mouse testis tissue lysates (35 µg/lane). This demonstrates the PLD3 antibody detected the PLD3 protein (arrow).