

Datasheet for ABIN1881670  
**anti-POLR2C antibody (C-Term)**[Go to Product page](#)

3 Images

2 Publications

## Overview

Quantity:	400 µL
Target:	POLR2C
Binding Specificity:	AA 200-228, C-Term
Reactivity:	Human, Mouse
Host:	Rabbit
Clonality:	Polyclonal
Conjugate:	This POLR2C antibody is un-conjugated
Application:	Western Blotting (WB), Immunofluorescence (IF), Immunohistochemistry (Paraffin-embedded Sections) (IHC (p))

## Product Details

Immunogen:	This POLR2C antibody is generated from rabbits immunized with a KLH conjugated synthetic peptide between 200-228 amino acids from the C-terminal region of human POLR2C.
Isotype:	Ig Fraction
Predicted Reactivity:	B
Purification:	This antibody is purified through a protein A column, followed by peptide affinity purification.

## Target Details

Target:	POLR2C
Alternative Name:	POLR2C ( <a href="#">POLR2C Products</a> )

## Target Details

Background:	DNA-dependent RNA polymerase catalyzes the transcription of DNA into RNA using the four ribonucleoside triphosphates as substrates. Component of RNA polymerase II which synthesizes mRNA precursors and many functional non-coding RNAs. Pol II is the central component of the basal RNA polymerase II transcription machinery. It is composed of mobile elements that move relative to each other. RPB3 is part of the core element with the central large cleft and the clamp element that moves to open and close the cleft (By similarity).
Molecular Weight:	31441
NCBI Accession:	<a href="#">NP_116558</a>
UniProt:	<a href="#">P19387</a>
Pathways:	<a href="#">Regulatory RNA Pathways</a>

## Application Details

Application Notes:	IF: 1:25. WB: 1:1000. IHC-P: 1:100
Restrictions:	For Research Use only

## Handling

Format:	Liquid
Buffer:	Purified polyclonal antibody supplied in PBS with 0.09 % (W/V) sodium azide.
Preservative:	Sodium azide
Precaution of Use:	This product contains Sodium azide: a POISONOUS AND HAZARDOUS SUBSTANCE which should be handled by trained staff only.
Storage:	4 °C, -20 °C
Expiry Date:	6 months

## Publications

Product cited in:	Mehta, Vazquez, Kulkarni, Kerrigan, Atwal, Metsugi, Toppmeyer, Levine, Hirshfield: "Polymorphic variants in TSC1 and TSC2 and their association with breast cancer phenotypes." in: <b>Breast cancer research and treatment</b> , Vol. 125, Issue 3, pp. 861-8, (2011) ( <a href="#">PubMed</a> ).
	Hoogeveen-Westerveld, Exalto, Maat-Kievit, van den Ouweland, Halley, Nellist: "Analysis of TSC1 truncations defines regions involved in TSC1 stability, aggregation and interaction." in:

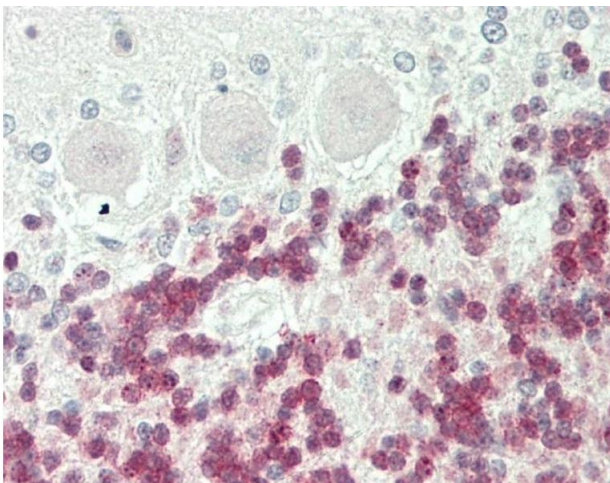
**Biochimica et biophysica acta**, Vol. 1802, Issue 9, pp. 774-81, (2010) ([PubMed](#)).

Mieulet, Lamb: "Tuberous sclerosis complex: linking cancer to metabolism." in: **Trends in molecular medicine**, Vol. 16, Issue 7, pp. 329-35, (2010) ([PubMed](#)).

Guo, Ying, Zhang, Yuan, Qian, Wang, Yang, He: "Tandem affinity purification and identification of the human TSC1 protein complex." in: **Acta biochimica et biophysica Sinica**, Vol. 42, Issue 4, pp. 266-73, (2010) ([PubMed](#)).

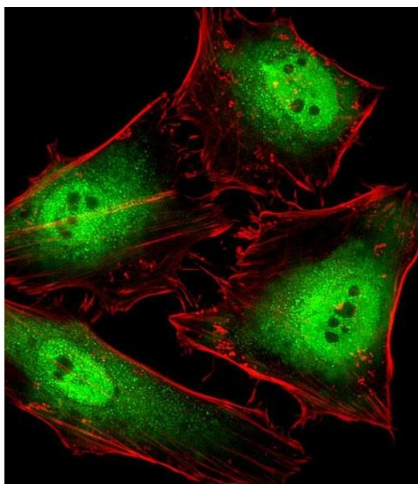
Liu, Wu, Chen, Ter-Minassian, Asomaning, Zhai, Wang, Su, Heist, Kulke, Lin, Liu, Christiani: "A Large-scale genetic association study of esophageal adenocarcinoma risk." in: **Carcinogenesis**, Vol. 31, Issue 7, pp. 1259-63, (2010) ([PubMed](#)).

## Images



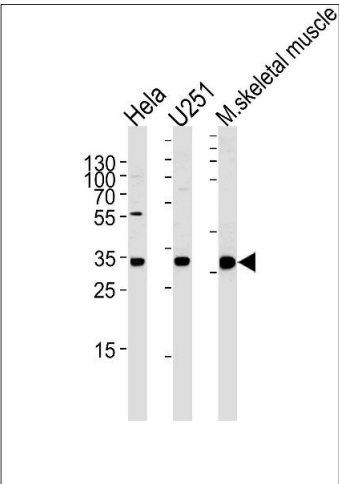
### Immunohistochemistry (Paraffin-embedded Sections)

**Image 1.** Formalin-fixed and paraffin-embedded H.cerebellum tissue reacted with POLR2C Antibody (C-term) (ABIN1881670 and ABIN2843632).



### Immunofluorescence

**Image 2.** Fluorescent image of HeLa cells stained with POLR2C Antibody (C-term) B. B was diluted at 1:25 dilution. An Alexa Fluor 488-conjugated goat anti-rabbit IgG at 1:400 dilution was used as the secondary antibody (green). Cytoplasmic actin was counterstained with Alexa Fluor® 555 conjugated with Phalloidin (red).



### Western Blotting

**Image 3.** POLR2C Antibody (C-term) (ABIN1881670 and ABIN2843632) western blot analysis in Hela, cell line and mouse skeletal muscle tissue lysates (35 µg/lane). This demonstrates the POLR2C antibody detected the POLR2C protein (arrow).