



[Go to Product page](#)

Datasheet for ABIN1881671

anti-POLR2G antibody (C-Term)

1 Image

4 Publications

Overview

Quantity:	400 µL
Target:	POLR2G
Binding Specificity:	AA 125-154, C-Term
Reactivity:	Human
Host:	Rabbit
Clonality:	Polyclonal
Conjugate:	This POLR2G antibody is un-conjugated
Application:	Western Blotting (WB)

Product Details

Immunogen:	This POLR2G antibody is generated from rabbits immunized with a KLH conjugated synthetic peptide between 125-154 amino acids from the C-terminal region of human POLR2G.
Clone:	RB42404
Isotype:	Ig Fraction
Predicted Reactivity:	B, Zf, M, Rat
Purification:	This antibody is purified through a protein A column, followed by peptide affinity purification.

Target Details

Target:	POLR2G
Alternative Name:	POLR2G (POLR2G Products)

Target Details

Background:	This gene encodes the seventh largest subunit of RNA polymerase II, the polymerase responsible for synthesizing messenger RNA in eukaryotes. The protein functions in transcription initiation, and is also thought to help stabilize transcribing polymerase molecules during elongation.
Molecular Weight:	19294
NCBI Accession:	NP_002687
UniProt:	P62487
Pathways:	Regulatory RNA Pathways

Application Details

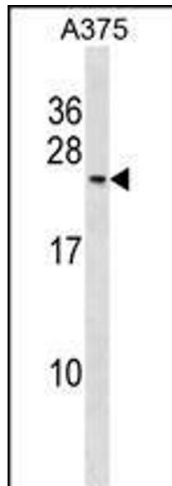
Application Notes:	WB: 1:1000
Restrictions:	For Research Use only

Handling

Format:	Liquid
Buffer:	Purified polyclonal antibody supplied in PBS with 0.09 % (W/V) sodium azide.
Preservative:	Sodium azide
Precaution of Use:	This product contains Sodium azide: a POISONOUS AND HAZARDOUS SUBSTANCE which should be handled by trained staff only.
Storage:	4 °C,-20 °C
Expiry Date:	6 months

Publications

Product cited in:	Akpa, Oyejola: "Modeling the transmission dynamics of HIV/AIDS epidemics: an introduction and a review." in: Journal of infection in developing countries , Vol. 4, Issue 10, pp. 597-608, (2010) (PubMed).
	Kladney, Cardiff, Kwiatkowski, Chiang, Weber, Arbeit, Lu: "Tuberous sclerosis complex 1: an epithelial tumor suppressor essential to prevent spontaneous prostate cancer in aged mice." in: Cancer research , Vol. 70, Issue 21, pp. 8937-47, (2010) (PubMed).



Western Blotting

Image 1. POLR2G Antibody (C-term) (ABIN1881671 and ABIN2839062) western blot analysis in cell line lysates (35 μ g/lane). This demonstrates the POLR2G antibody detected the POLR2G protein (arrow).