



[Go to Product page](#)

Datasheet for ABIN1881673  
**anti-POMP antibody (C-Term)**

2 Images

Overview

Quantity:	400 µL
Target:	POMP
Binding Specificity:	AA 105-131, C-Term
Reactivity:	Human, Mouse
Host:	Rabbit
Clonality:	Polyclonal
Conjugate:	This POMP antibody is un-conjugated
Application:	Western Blotting (WB)

Product Details

Immunogen:	This POMP antibody is generated from rabbits immunized with a KLH conjugated synthetic peptide between 105-131 amino acids from the C-terminal region of human POMP.
Clone:	RB43046
Isotype:	Ig Fraction
Purification:	This antibody is purified through a protein A column, followed by peptide affinity purification.

Target Details

Target:	POMP
Alternative Name:	POMP ( <a href="#">POMP Products</a> )
Background:	Molecular chaperone essential for the assembly of standard proteasomes and

## Target Details

immunoproteasomes. Degraded after completion of proteasome maturation. Mediates the association of 20S preproteasome with the endoplasmic reticulum.

Molecular Weight: 15789

NCBI Accession: [NP\\_057016](#)

UniProt: [Q9Y244](#)

## Application Details

Application Notes: WB: 1:1000. WB: 1:1000

Restrictions: For Research Use only

## Handling

Format: Liquid

Buffer: Purified polyclonal antibody supplied in PBS with 0.09 % (W/V) sodium azide.

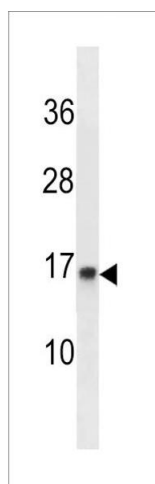
Preservative: Sodium azide

Precaution of Use: This product contains Sodium azide: a POISONOUS AND HAZARDOUS SUBSTANCE which should be handled by trained staff only.

Storage: 4 °C,-20 °C

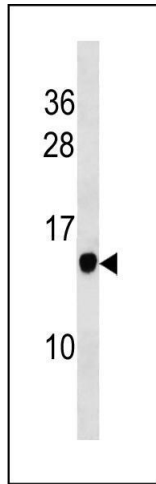
Expiry Date: 6 months

## Images



### Western Blotting

**Image 1.** PO Antibody (C-term) (ABIN1881673 and ABIN2843330) western blot analysis in WiDr cell line lysates (35 µg/lane). This demonstrates the PO antibody detected the PO protein (arrow).



### Western Blotting

**Image 2.** PO Antibody (C-term) (ABIN1881673 and ABIN2843330) western blot analysis in mouse stomach tissue lysates (35 µg/lane). This demonstrates the PO antibody detected the PO protein (arrow).