



Datasheet for ABIN1881679
anti-PPM1H antibody (AA 234-262)



[Go to Product page](#)

1 Image

2 Publications

Overview

Quantity:	400 µL
Target:	PPM1H
Binding Specificity:	AA 234-262
Reactivity:	Mouse
Host:	Rabbit
Clonality:	Polyclonal
Conjugate:	This PPM1H antibody is un-conjugated
Application:	Western Blotting (WB)

Product Details

Immunogen:	This Mouse Ppm1h antibody is generated from rabbits immunized with a KLH conjugated synthetic peptide between 234-262 amino acids from the Central region of mouse Ppm1h.
Clone:	RB42379
Isotype:	Ig Fraction
Predicted Reactivity:	Rat
Purification:	This antibody is purified through a protein A column, followed by peptide affinity purification.

Target Details

Target:	PPM1H
Alternative Name:	Ppm1h (PPM1H Products)

Target Details

Background: The function of this protein is unknown.

Molecular Weight: 56380

NCBI Accession: [NP_001103688](#), [NP_795893](#)

UniProt: [Q3UYC0](#)

Application Details

Application Notes: WB: 1:1000

Restrictions: For Research Use only

Handling

Format: Liquid

Buffer: Purified polyclonal antibody supplied in PBS with 0.09 % (W/V) sodium azide.

Preservative: Sodium azide

Precaution of Use: This product contains Sodium azide: a POISONOUS AND HAZARDOUS SUBSTANCE which should be handled by trained staff only.

Storage: 4 °C, -20 °C

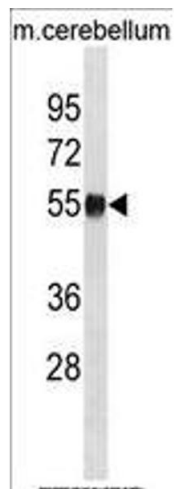
Expiry Date: 6 months

Publications

Product cited in: Wendeler, Pabst, Wang, Strouse, Wang, Hunter: "Process-scale purification and analytical characterization of highly gamma-carboxylated recombinant human prothrombin." in: **Journal of chromatography. A**, Vol. 1325, pp. 171-8, (2014) ([PubMed](#)).

Yang, Ko, Yang, Kim, Seo, Park, Choi, Seong, Kweon: "Interleukin-1 promotes coagulation, which is necessary for protective immunity in the lung against Streptococcus pneumoniae infection." in: **The Journal of infectious diseases**, Vol. 207, Issue 1, pp. 50-60, (2012) ([PubMed](#)).

Lim, Joy, Hill, San Brian Chia: "Novel agmatine and agmatine-like peptidomimetic inhibitors of the West Nile virus NS2B/NS3 serine protease." in: **European journal of medicinal chemistry**, Vol. 46, Issue 7, pp. 3130-4, (2011) ([PubMed](#)).



Western Blotting

Image 1. MOUSE Ppm1h Antibody (Center) (ABIN1881679 and ABIN2839056) western blot analysis in mouse cerebellum tissue lysates (35 µg/lane). This demonstrates the MOUSE Ppm1h antibody detected the MOUSE Ppm1h protein (arrow).