



Datasheet for ABIN1881686
anti-PROX1 antibody (AA 175-206)



[Go to Product page](#)

1 Image

4 Publications

Overview

Quantity:	400 µL
Target:	PROX1
Binding Specificity:	AA 175-206
Reactivity:	Human
Host:	Rabbit
Clonality:	Polyclonal
Conjugate:	This PROX1 antibody is un-conjugated
Application:	Western Blotting (WB)

Product Details

Immunogen:	This PROX1 antibody is generated from rabbits immunized with a KLH conjugated synthetic peptide between 175-206 amino acids from human PROX1.
Clone:	RB15516
Isotype:	Ig Fraction
Predicted Reactivity:	M
Purification:	This antibody is purified through a protein A column, followed by peptide affinity purification.

Target Details

Target:	PROX1
Alternative Name:	PROX1 (PROX1 Products)

Target Details

Background: The expression pattern of Prox1 suggests that it has a role in a variety of embryonic tissues, including lens. Prox mRNA is present in many different human tissues with lens demonstrating the highest level. Homozygous Prox1-null mice die at midgestation from multiple developmental defects, and a targeted effect on lens development has been reported. Prox1 inactivation caused abnormal cellular proliferation, downregulated expression of the cell cycle inhibitors Cdkn1b and Cdkn1c, misexpression of E-cadherin, and excessive apoptosis. Consequently, mutant lens cells failed to polarize and elongate properly, resulting in a hollow lens. Prox1 is expressed in a subpopulation of endothelial cells that by budding and sprouting give rise to the lymphatic system. Prox1 appears to be a specific and required regulator of the development of the lymphatic system. Prox1 also has been documented to be required for hepatocyte migration in the mouse. Loss of Prox1 results in a smaller liver with a reduced population of clustered hepatocytes. The homeodomain protein Prox1 regulates the egress of progenitor cells from the cell cycle in the embryonic mouse retina. Cells lacking Prox1 are less likely to stop dividing, and ectopic expression of Prox1 forces progenitor cells to exit the cell cycle. Prox1 acts as a key participant in progenitor-cell proliferation and cell-fate determination in the vertebrate retina.

Molecular Weight: 83203

NCBI Accession: [NP_001257545](#), [NP_002754](#)

UniProt: [Q92786](#)

Pathways: [Stem Cell Maintenance](#), [Regulation of Muscle Cell Differentiation](#)

Application Details

Application Notes: WB: 1:1000

Restrictions: For Research Use only

Handling

Format: Liquid

Buffer: Purified polyclonal antibody supplied in PBS with 0.09 % (W/V) sodium azide.

Preservative: Sodium azide

Precaution of Use: This product contains Sodium azide: a POISONOUS AND HAZARDOUS SUBSTANCE which should be handled by trained staff only.

Storage: 4 °C, -20 °C

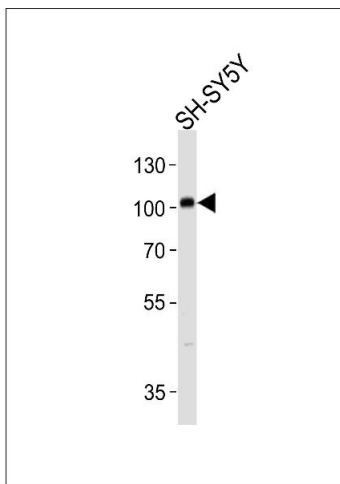
Handling

Expiry Date: 6 months

Publications

- Product cited in: Wendeler, Pabst, Wang, Strouse, Wang, Hunter: "Process-scale purification and analytical characterization of highly gamma-carboxylated recombinant human prothrombin." in: **Journal of chromatography. A**, Vol. 1325, pp. 171-8, (2014) ([PubMed](#)).
- Yang, Ko, Yang, Kim, Seo, Park, Choi, Seong, Kweon: "Interleukin-1 promotes coagulation, which is necessary for protective immunity in the lung against Streptococcus pneumoniae infection." in: **The Journal of infectious diseases**, Vol. 207, Issue 1, pp. 50-60, (2012) ([PubMed](#)).
- Lim, Joy, Hill, San Brian Chia: "Novel agmatine and agmatine-like peptidomimetic inhibitors of the West Nile virus NS2B/NS3 serine protease." in: **European journal of medicinal chemistry**, Vol. 46, Issue 7, pp. 3130-4, (2011) ([PubMed](#)).

Images



Western Blotting

Image 1. PROX-1 Antibody (ABIN1881686 and ABIN2850428) western blot analysis in SH-SY5Y cell line lysates (35 µg/lane). This demonstrates the PROX-1 antibody detected the PROX-1 protein (arrow).