

Datasheet for ABIN1881687  
**anti-PRPF39 antibody (C-Term)**



[Go to Product page](#)

1 Image 3 Publications

## Overview

Quantity:	400 µL
Target:	PRPF39
Binding Specificity:	AA 591-620, C-Term
Reactivity:	Human
Host:	Rabbit
Clonality:	Polyclonal
Conjugate:	This PRPF39 antibody is un-conjugated
Application:	Western Blotting (WB)

## Product Details

Immunogen:	This PRPF39 antibody is generated from rabbits immunized with a KLH conjugated synthetic peptide between 591-620 amino acids from the C-terminal region of human PRPF39.
Clone:	RB33561
Isotype:	Ig Fraction
Predicted Reactivity:	M
Purification:	This antibody is purified through a protein A column, followed by peptide affinity purification.

## Target Details

Target:	PRPF39
Alternative Name:	PRPF39 ( <a href="#">PRPF39 Products</a> )

## Target Details

---

Background: Involved in pre-mRNA splicing (By similarity).

Molecular Weight: 78430

NCBI Accession: [NP\\_060392](#)

UniProt: [Q86UA1](#)

## Application Details

---

Application Notes: WB: 1:1000

Restrictions: For Research Use only

## Handling

---

Format: Liquid

Buffer: Purified polyclonal antibody supplied in PBS with 0.09 % (W/V) sodium azide.

Preservative: Sodium azide

Precaution of Use: This product contains Sodium azide: a POISONOUS AND HAZARDOUS SUBSTANCE which should be handled by trained staff only.

Storage: 4 °C,-20 °C

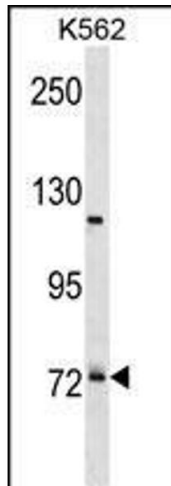
Expiry Date: 6 months

## Publications

---

Product cited in: Akpa, Oyejola: "Modeling the transmission dynamics of HIV/AIDS epidemics: an introduction and a review." in: **Journal of infection in developing countries**, Vol. 4, Issue 10, pp. 597-608, (2010) ([PubMed](#)).

Kladney, Cardiff, Kwiatkowski, Chiang, Weber, Arbeit, Lu: "Tuberous sclerosis complex 1: an epithelial tumor suppressor essential to prevent spontaneous prostate cancer in aged mice." in: **Cancer research**, Vol. 70, Issue 21, pp. 8937-47, (2010) ([PubMed](#)).



### Western Blotting

**Image 1.** PRPF39 Antibody (C-term) (ABIN1881687 and ABIN2839002) western blot analysis in K562 cell line lysates (35 µg/lane). This demonstrates the PRPF39 antibody detected the PRPF39 protein (arrow).