

Datasheet for ABIN1881690
anti-PRRX1 antibody (C-Term)[Go to Product page](#)

1 Image

2 Publications

Overview

Quantity:	400 µL
Target:	PRRX1
Binding Specificity:	AA 213-242, C-Term
Reactivity:	Human
Host:	Rabbit
Clonality:	Polyclonal
Application:	Western Blotting (WB)

Product Details

Immunogen:	This PRRX1 antibody is generated from rabbits immunized with a KLH conjugated synthetic peptide between 213-242 amino acids from the C-terminal region of human PRRX1.
Clone:	RB40539
Isotype:	Ig Fraction
Predicted Reactivity:	C, M, Rat
Purification:	This antibody is purified through a protein A column, followed by peptide affinity purification.

Target Details

Target:	PRRX1
Alternative Name:	PRRX1 (PRRX1 Products)
Background:	The DNA-associated protein encoded by this gene is a member of the paired family of

Target Details

homeobox proteins localized to the nucleus. The protein functions as a transcription co-activator, enhancing the DNA-binding activity of serum response factor, a protein required for the induction of genes by growth and differentiation factors. The protein regulates muscle creatine kinase, indicating a role in the establishment of diverse mesodermal muscle types. Alternative splicing yields two isoforms that differ in abundance and expression patterns. [provided by RefSeq].

Molecular Weight: 27296

NCBI Accession: [NP_008833](#), [NP_073207](#)

UniProt: [P54821](#)

Application Details

Application Notes: WB: 1:1000

Restrictions: For Research Use only

Handling

Format: Liquid

Buffer: Purified polyclonal antibody supplied in PBS with 0.09 % (W/V) sodium azide.

Preservative: Sodium azide

Precaution of Use: This product contains Sodium azide: a POISONOUS AND HAZARDOUS SUBSTANCE which should be handled by trained staff only.

Storage: 4 °C,-20 °C

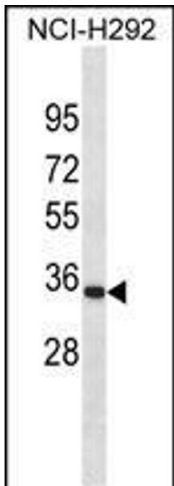
Expiry Date: 6 months

Publications

Product cited in: Jiang, Stefanovic: "Homeobox gene Prx1 is expressed in activated hepatic stellate cells and transactivates collagen alpha1(I) promoter." in: **Experimental biology and medicine (Maywood, N.J.)**, Vol. 233, Issue 3, pp. 286-96, (2008) ([PubMed](#)).

Vieira, McHenry, Daack-Hirsch, Murray, Marazita: "Candidate gene/loci studies in cleft lip/palate and dental anomalies finds novel susceptibility genes for clefts." in: **Genetics in medicine : official journal of the American College of Medical Genetics**, Vol. 10, Issue 9, pp. 668-74, (

2008) ([PubMed](#)).



Western Blotting

Image 1. PRRX1 Antibody (C-term) (ABIN1881690 and ABIN2838398) western blot analysis in NCI- cell line lysates (35 µg/lane).This demonstrates the PRRX1 antibody detected the PRRX1 protein (arrow).