

Datasheet for ABIN1881696  
**anti-PSMB2 antibody (C-Term)**[Go to Product page](#)[2 Images](#)[3 Publications](#)

## Overview

Quantity:	400 µL
Target:	PSMB2
Binding Specificity:	AA 133-163, C-Term
Reactivity:	Human, Mouse, Rat
Host:	Rabbit
Clonality:	Polyclonal
Conjugate:	This PSMB2 antibody is un-conjugated
Application:	Western Blotting (WB), Immunohistochemistry (Paraffin-embedded Sections) (IHC (p))

## Product Details

Immunogen:	This PSMB2 antibody is generated from rabbits immunized with a KLH conjugated synthetic peptide between 133-163 amino acids from the C-terminal region of human PSMB2.
Isotype:	Ig Fraction
Purification:	This antibody is purified through a protein A column, followed by peptide affinity purification.

## Target Details

Target:	PSMB2
Alternative Name:	PSMB2 ( <a href="#">PSMB2 Products</a> )
Background:	The proteasome is a multicatalytic proteinase complex which is characterized by its ability to cleave peptides with Arg, Phe, Tyr, Leu, and Glu adjacent to the leaving group at neutral or slightly basic pH . The proteasome has an ATP-dependent proteolytic activity. This subunit has

## Target Details

	a trypsin-like activity.
Molecular Weight:	22836
NCBI Accession:	<a href="#">NP_002785</a>
UniProt:	<a href="#">P49721</a>
Pathways:	<a href="#">Mitotic G1-G1/S Phases</a> , <a href="#">DNA Replication</a> , <a href="#">Synthesis of DNA</a>

## Application Details

Application Notes:	WB: 1:1000. IHC-P: 1:25
Restrictions:	For Research Use only

## Handling

Format:	Liquid
Buffer:	Purified polyclonal antibody supplied in PBS with 0.09 % (W/V) sodium azide.
Preservative:	Sodium azide
Precaution of Use:	This product contains Sodium azide: a POISONOUS AND HAZARDOUS SUBSTANCE which should be handled by trained staff only.
Storage:	4 °C,-20 °C
Expiry Date:	6 months

## Publications

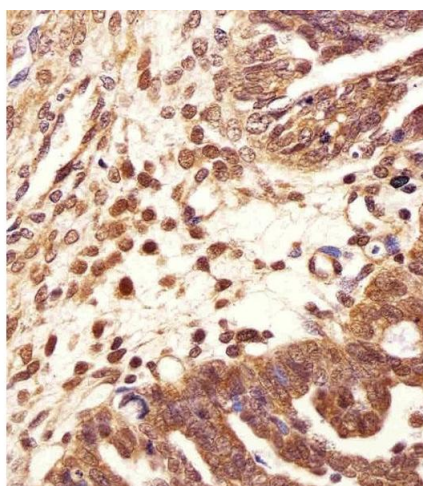
Product cited in:	Sun, Sun, Chen, Liao, He, Wang, Chen, Hu, Qiu: "microRNA-27b shuttled by mesenchymal stem cell-derived exosomes prevents sepsis by targeting JMJD3 and downregulating NF-κB signaling pathway." in: <b>Stem cell research &amp; therapy</b> , Vol. 12, Issue 1, pp. 14, (2021) ( <a href="#">PubMed</a> ).
	Reithmair, Buschmann, Märte, Kirchner, Hagl, Kaufmann, Pfob, Chouker, Steinlein, Pfaffl, Schelling: "Cellular and extracellular miRNAs are blood-compartment-specific diagnostic targets in sepsis." in: <b>Journal of cellular and molecular medicine</b> , Vol. 21, Issue 10, pp. 2403-2411, (2018) ( <a href="#">PubMed</a> ).
	Youn, Friesen, Kishimoto, Henne, Kurat, Ye, Ceccarelli, Sicheri, Kohlwein, McMahon, Andrews: "Dissecting BAR domain function in the yeast Amphiphysins Rvs161 and Rvs167 during

endocytosis." in: **Molecular biology of the cell**, Vol. 21, Issue 17, pp. 3054-69, (2010) ([PubMed](#)).

Qian, Shi, Pang, Wu, Yu, Li, Wang, Zhou: "[Identification and expression of two new secretory proteins associated with prostate cancer]." in: **Yi chuan = Hereditas / Zhongguo yi chuan xue hui bian ji**, Vol. 32, Issue 3, pp. 235-41, (2010) ([PubMed](#)).

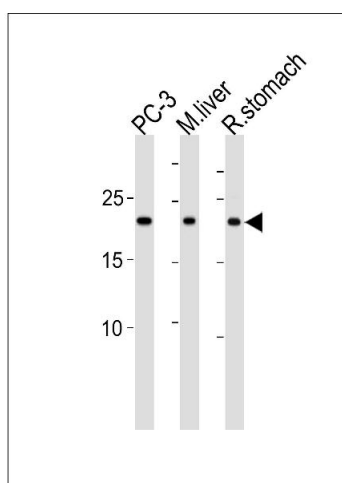
Hwangbo, Kim, Lee, Lee: "Activation of the integrin effector kinase focal adhesion kinase in cancer cells is regulated by crosstalk between protein kinase Calpha and the PDZ adapter protein mda-9/Syntenin." in: **Cancer research**, Vol. 70, Issue 4, pp. 1645-55, (2010) ([PubMed](#)).

## Images



### Immunohistochemistry (Paraffin-embedded Sections)

**Image 1.** Immunohistochemical analysis of paraffin-embedded H. ovarian carcinoma section using PSMB2 Antibody (C-term) B. B was diluted at 1:25 dilution. A undiluted biotinylated goat polyvalent antibody was used as the secondary, followed by DAB staining.



### Western Blotting

**Image 2.** PSMB2 Antibody (C-term) (ABIN1881696 and ABIN2843611) western blot analysis in PC-3 cell line, mouse liver and rat stomach tissue lysates (35 µg/lane). This demonstrates the PSMB2 antibody detected the PSMB2 protein (arrow).