

Datasheet for ABIN1881698
anti-PSMD4/ASF antibody (C-Term)**1** Image**5** Publications[Go to Product page](#)

Overview

Quantity:	400 µL
Target:	PSMD4/ASF (Psm4)
Binding Specificity:	AA 300-328, C-Term
Reactivity:	Human
Host:	Rabbit
Clonality:	Polyclonal
Conjugate:	This PSMD4/ASF antibody is un-conjugated
Application:	Western Blotting (WB)

Product Details

Immunogen:	This PSMD4 antibody is generated from rabbits immunized with a KLH conjugated synthetic peptide between 300-328 amino acids from the C-terminal region of human PSMD4.
Clone:	RB41678
Isotype:	Ig Fraction
Purification:	This antibody is purified through a protein A column, followed by peptide affinity purification.

Target Details

Target:	PSMD4/ASF (Psm4)
Alternative Name:	PSMD4 (Psm4 Products)
Background:	The 26S proteasome is a multicatalytic proteinase complex with a highly ordered structure

Target Details

composed of 2 complexes, a 20S core and a 19S regulator. The 20S core is composed of 4 rings of 28 non-identical subunits, 2 rings are composed of 7 alpha subunits and 2 rings are composed of 7 beta subunits. The 19S regulator is composed of a base, which contains 6 ATPase subunits and 2 non-ATPase subunits, and a lid, which contains up to 10 non-ATPase subunits. Proteasomes are distributed throughout eukaryotic cells at a high concentration and cleave peptides in an ATP/ubiquitin-dependent process in a non-lysosomal pathway. An essential function of a modified proteasome, the immunoproteasome, is the processing of class I MHC peptides. This gene encodes one of the non-ATPase subunits of the 19S regulator lid. Pseudogenes have been identified on chromosomes 10 and 21.

Molecular Weight: 40737

NCBI Accession: [NP_002801](#)

UniProt: [P55036](#)

Pathways: [Mitotic G1-G1/S Phases](#), [DNA Replication](#), [Synthesis of DNA](#), [Ubiquitin Proteasome Pathway](#)

Application Details

Application Notes: WB: 1:1000

Restrictions: For Research Use only

Handling

Format: Liquid

Buffer: Purified polyclonal antibody supplied in PBS with 0.09 % (W/V) sodium azide.

Preservative: Sodium azide

Precaution of Use: This product contains Sodium azide: a POISONOUS AND HAZARDOUS SUBSTANCE which should be handled by trained staff only.

Storage: 4 °C, -20 °C

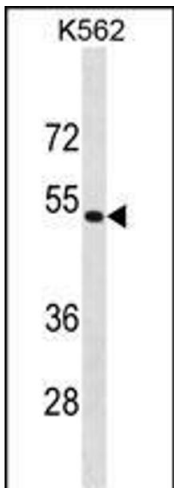
Expiry Date: 6 months

Publications

Product cited in: Akpa, Oyejola: "Modeling the transmission dynamics of HIV/AIDS epidemics: an introduction and a review." in: **Journal of infection in developing countries**, Vol. 4, Issue 10, pp. 597-608, (2010) ([PubMed](#)).

Kladney, Cardiff, Kwiatkowski, Chiang, Weber, Arbeit, Lu: "Tuberous sclerosis complex 1: an epithelial tumor suppressor essential to prevent spontaneous prostate cancer in aged mice." in: **Cancer research**, Vol. 70, Issue 21, pp. 8937-47, (2010) ([PubMed](#)).

Images



Western Blotting

Image 1. PSMD4 Antibody (C-term) (ABIN1881698 and ABIN2838852) western blot analysis in K562 cell line lysates (35 µg/lane). This demonstrates the PSMD4 antibody detected the PSMD4 protein (arrow).