



Datasheet for ABIN1881704
anti-PTGER4 antibody (AA 242-269)



[Go to Product page](#)

2 Images

4 Publications

Overview

Quantity:	400 µL
Target:	PTGER4
Binding Specificity:	AA 242-269
Reactivity:	Human, Mouse
Host:	Rabbit
Clonality:	Polyclonal
Conjugate:	This PTGER4 antibody is un-conjugated
Application:	Western Blotting (WB), Immunohistochemistry (Paraffin-embedded Sections) (IHC (p))

Product Details

Immunogen:	This PTGER4 antibody is generated from rabbits immunized with a KLH conjugated synthetic peptide between 242-269 amino acids from the Central region of human PTGER4.
Clone:	RB44208
Isotype:	Ig Fraction
Predicted Reactivity:	B, Rb, Rat
Purification:	This antibody is purified through a protein A column, followed by peptide affinity purification.

Target Details

Target:	PTGER4
Alternative Name:	PTGER4 (PTGER4 Products)

Target Details

Background: Receptor for prostaglandin E2 (PGE2). The activity of this receptor is mediated by G(s) proteins that stimulate adenylate cyclase. Has a relaxing effect on smooth muscle. May play an important role in regulating renal hemodynamics, intestinal epithelial transport, adrenal aldosterone secretion, and uterine function.

Molecular Weight: 53119

NCBI Accession: [NP_000949](#)

UniProt: [P35408](#)

Application Details

Application Notes: WB: 1:1000. IHC-P: 1:25

Restrictions: For Research Use only

Handling

Format: Liquid

Buffer: Purified polyclonal antibody supplied in PBS with 0.09 % (W/V) sodium azide.

Preservative: Sodium azide

Precaution of Use: This product contains Sodium azide: a POISONOUS AND HAZARDOUS SUBSTANCE which should be handled by trained staff only.

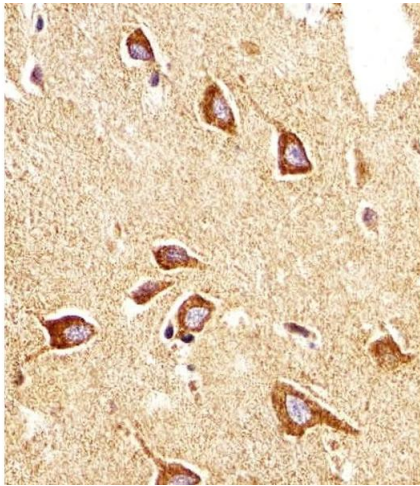
Storage: 4 °C,-20 °C

Expiry Date: 6 months

Publications

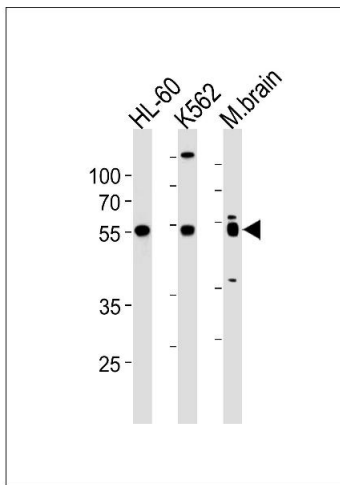
Product cited in: Akpa, Oyejola: "Modeling the transmission dynamics of HIV/AIDS epidemics: an introduction and a review." in: **Journal of infection in developing countries**, Vol. 4, Issue 10, pp. 597-608, (2010) ([PubMed](#)).

Kladney, Cardiff, Kwiatkowski, Chiang, Weber, Arbeit, Lu: "Tuberous sclerosis complex 1: an epithelial tumor suppressor essential to prevent spontaneous prostate cancer in aged mice." in: **Cancer research**, Vol. 70, Issue 21, pp. 8937-47, (2010) ([PubMed](#)).



Immunohistochemistry (Paraffin-embedded Sections)

Image 1. Immunohistochemical analysis of paraffin-embedded H. brain section using PTGER4 Antibody (Center) (ABIN1881704 and ABIN2843394). (ABIN1881704 and ABIN2843394) was diluted at 1:25 dilution. A undiluted biotinylated goat polyvalent antibody was used as the secondary, followed by DAB staining.



Western Blotting

Image 2. PTGER4 Antibody (Center) (ABIN1881704 and ABIN2843394) western blot analysis in HL-60, K562 cell line and mouse brain lysates (35 µg/lane). This demonstrates the PTGER4 antibody detected the PTGER4 protein (arrow).