



[Go to Product page](#)

Datasheet for ABIN1881711  
**anti-CBWD1 antibody (C-Term)**

1 Image

Overview

|                      |                                      |
|----------------------|--------------------------------------|
| Quantity:            | 400 µL                               |
| Target:              | CBWD1                                |
| Binding Specificity: | AA 325-351, C-Term                   |
| Reactivity:          | Rat                                  |
| Host:                | Rabbit                               |
| Clonality:           | Polyclonal                           |
| Conjugate:           | This CBWD1 antibody is un-conjugated |
| Application:         | Western Blotting (WB)                |

Product Details

|               |  |
|---------------|--|
| Immunogen:    | This Rat Cbwd1 antibody is generated from rabbits immunized with a KLH conjugated synthetic peptide between 325-351 amino acids from the C-terminal region of rat Cbwd1. |
| Isotype:      | Ig Fraction  |
| Purification: | This antibody is purified through a protein A column, followed by peptide affinity purification.   |

Target Details

|                   |  |
|-------------------|--|
| Target:           | CBWD1                                    |
| Alternative Name: | Cbwd1 ( <a href="#">CBWD1 Products</a> ) |
| Molecular Weight: | 43931                                    |
| NCBI Accession:   | <a href="#">NP_598219</a>                |

## Target Details

UniProt: [Q99MB4](#)

## Application Details

Application Notes: WB: 1:1000

Restrictions: For Research Use only

## Handling

Format: Liquid

Buffer: Purified polyclonal antibody supplied in PBS with 0.09 % (W/V) sodium azide.

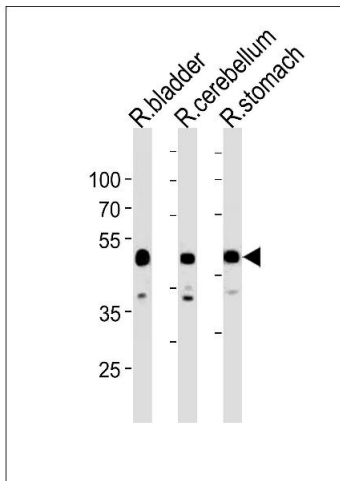
Preservative: Sodium azide

Precaution of Use: This product contains Sodium azide: a POISONOUS AND HAZARDOUS SUBSTANCE which should be handled by trained staff only.

Storage: 4 °C,-20 °C

Expiry Date: 6 months

## Images



### Western Blotting

**Image 1.** Rat Cbwd1 Antibody (C-term) (ABIN1881711 and ABIN2843452) western blot analysis in rat bladder, cerebellum and stomach tissue lysates (35  $\mu$ g/lane). This demonstrates the Rat Cbwd1 antibody detected the Rat Cbwd1 protein (arrow).