

Datasheet for ABIN1881713
anti-Cyclin L2 antibody (C-Term)[Go to Product page](#)

1 Image

Overview

Quantity:	400 µL
Target:	Cyclin L2 (CCNL2)
Binding Specificity:	AA 422-450, C-Term
Reactivity:	Rat
Host:	Rabbit
Clonality:	Polyclonal
Application:	Western Blotting (WB)

Product Details

Immunogen:	This RAT Ccnl2 antibody is generated from rabbits immunized with a KLH conjugated synthetic peptide between 422-450 amino acids from the C-terminal region of rat Ccnl2.
Clone:	RB43406
Isotype:	Ig Fraction
Predicted Reactivity:	M
Purification:	This antibody is purified through a protein A column, followed by peptide affinity purification.

Target Details

Target:	Cyclin L2 (CCNL2)
Alternative Name:	Ccnl2 (CCNL2 Products)
Background:	Transcriptional regulator which participates in regulating the pre-mRNA splicing process. Also

Target Details

modulates the expression of critical apoptotic factor, leading to cell apoptosis (By similarity).

Molecular Weight: 58246

NCBI Accession: [NP_001013112](#)

UniProt: [Q5I0H5](#)

Application Details

Application Notes: WB: 1:1000

Restrictions: For Research Use only

Handling

Format: Liquid

Buffer: Purified polyclonal antibody supplied in PBS with 0.09 % (W/V) sodium azide.

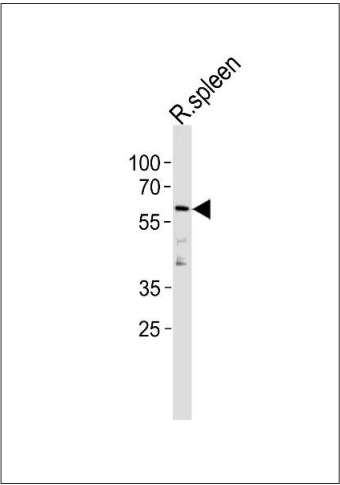
Preservative: Sodium azide

Precaution of Use: This product contains Sodium azide: a POISONOUS AND HAZARDOUS SUBSTANCE which should be handled by trained staff only.

Storage: 4 °C, -20 °C

Expiry Date: 6 months

Images



Western Blotting

Image 1. Rat Ccnl2 Antibody (C-term) (ABIN1881713 and ABIN2843431) western blot analysis in rat spleen tissue lysates (35 µg/lane). This demonstrates the Rat Ccnl2 antibody detected the Rat Ccnl2 protein (arrow).