

Datasheet for ABIN1881716  
**anti-CGREF1 antibody (C-Term)**[Go to Product page](#)

2 Images

1 Publication

## Overview

Quantity:	400 µL
Target:	CGREF1
Binding Specificity:	AA 220-248, C-Term
Reactivity:	Rat
Host:	Rabbit
Clonality:	Polyclonal
Conjugate:	This CGREF1 antibody is un-conjugated
Application:	Western Blotting (WB), Immunohistochemistry (Paraffin-embedded Sections) (IHC (p))

## Product Details

Immunogen:	This RAT Cgref1 antibody is generated from rabbits immunized with a KLH conjugated synthetic peptide between 220-248 amino acids from the C-terminal region of rat Cgref1.
Isotype:	Ig Fraction
Purification:	This antibody is purified through a protein A column, followed by peptide affinity purification.

## Target Details

Target:	CGREF1
Alternative Name:	Cgref1 ( <a href="#">CGREF1 Products</a> )
Background:	Mediates cell-cell adhesion in a calcium-dependent manner. Able to inhibit growth in several cell lines.

## Target Details

Molecular Weight:	30835
NCBI Accession:	<a href="#">NP_620787</a>
UniProt:	<a href="#">P97586</a>

## Application Details

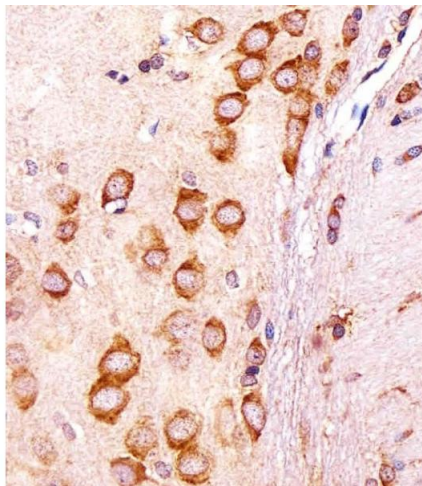
Application Notes:	WB: 1:1000. IHC-P: 1:25
Restrictions:	For Research Use only

## Handling

Format:	Liquid
Buffer:	Purified polyclonal antibody supplied in PBS with 0.09 % (W/V) sodium azide.
Preservative:	Sodium azide
Precaution of Use:	This product contains Sodium azide: a POISONOUS AND HAZARDOUS SUBSTANCE which should be handled by trained staff only.
Storage:	4 °C,-20 °C
Expiry Date:	6 months

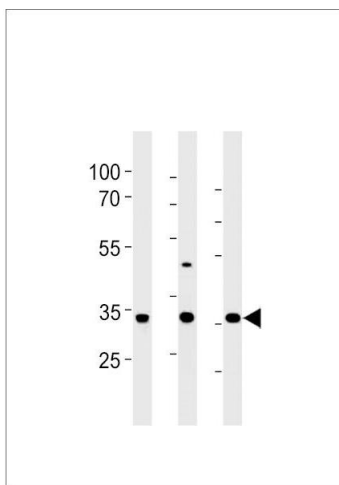
## Publications

Product cited in:	<p>Carrascal, Ovelleiro, Casas, Gay, Abian: "Phosphorylation analysis of primary human T lymphocytes using sequential IMAC and titanium oxide enrichment." in: <b>Journal of proteome research</b>, Vol. 7, Issue 12, pp. 5167-76, (2009) (<a href="#">PubMed</a>).</p> <p>Koulich, Li, DeMartino: "Relative structural and functional roles of multiple deubiquitylating proteins associated with mammalian 26S proteasome." in: <b>Molecular biology of the cell</b>, Vol. 19, Issue 3, pp. 1072-82, (2008) (<a href="#">PubMed</a>).</p> <p>Reuter, Medhurst, Waisfisz, Zhi, Herterich, Hoehn, Gross, Joenje, Hoatlin, Mathew, Huber: "Yeast two-hybrid screens imply involvement of Fanconi anemia proteins in transcription regulation, cell signaling, oxidative metabolism, and cellular transport." in: <b>Experimental cell research</b>, Vol. 289, Issue 2, pp. 211-21, (2003) (<a href="#">PubMed</a>).</p>
-------------------	--



#### Immunohistochemistry (Paraffin-embedded Sections)

**Image 1.** Immunohistochemical analysis of paraffin-embedded R. brain section using R Cgref1 Antibody (C-term) B. B was diluted at 1:25 dilution. A undiluted biotinylated goat polyvalent antibody was used as the secondary, followed by DAB staining.



#### Western Blotting

**Image 2.** RAT Cgref1 Antibody (C-term) (ABIN1881716 and ABIN2843443) western blot analysis in rat liver, stomach and testis tissue lysates (35 µg/lane). This demonstrates the RAT Cgref1 antibody detected the RAT Cgref1 protein (arrow).